

# TAMPA ELECTRIC RELIABILITY YOU CAN COUNT ON

Dependable energy is not just a convenience – it’s a lifeline. From powering hospitals and other essential services to fueling homes and businesses, a continuous source of electricity is more important than ever. Tampa Electric delivers 99.98% electric service reliability in blue skies and gray through careful planning, smart investments and safe, committed execution.

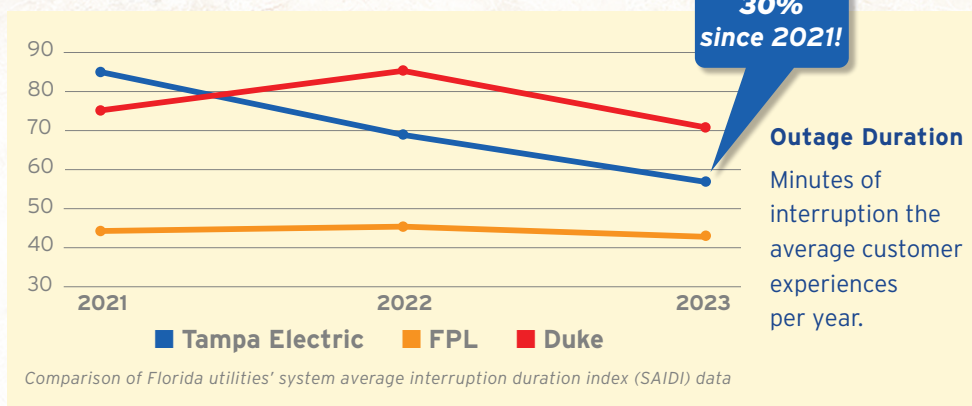
## ENHANCING RELIABILITY TO KEEP YOUR BUSINESS HUMMING

Since 2021, we’ve:

- Increased our service reliability by more than 30%.
- Reduced power outage frequency by more than 20%.
- Shortened outage durations by almost 30%.

And we’re not stopping there. We continue to make investments that strengthen our system and improve its resiliency for our customers, who depend on us every day.

See how we compare to other Florida utilities.



## SMART TECHNOLOGY TO KEEP POWER FLOWING

One of our latest smart tools, self-healing technology, works like a GPS redirecting traffic around an accident. It helps identify power line problems and routes electricity around them remotely to reduce power outages, restore power sooner and decrease operating costs to keep your bill as low as possible.



## STORM READY FOR BETTER RELIABILITY

We continually work to harden our system against extreme weather by burying power lines, replacing wood power poles with steel and concrete, modernizing our equipment and maintaining tree clearance. As a result, we have:



- **Decreased momentary power flickers by more than 50%.**
- **Reduced tree-related outages by 40%.**
- **Shortened power restoration times.**
- **Cut storm-related restoration expenses.**

For more information, visit [TampaElectric.com/Reliability](https://www.tampaelectric.com/Reliability).