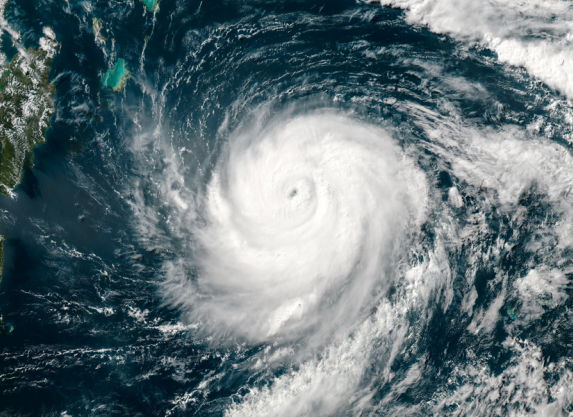


BE PREPARED.

Whether you're new to Florida or a seasoned veteran, the more you know about storms and being prepared, the better. When a storm is likely, the National Weather Service issues weather alerts to describe expected hurricane conditions and encourage you to take appropriate protective actions.

KNOW WHAT TO EXPECT

Hurricanes are massive storm systems that include high winds, heavy rains, storm surge, coastal and inland flooding, rip currents, and tornadoes. These threats can damage or destroy homes, buildings, and roads, as well as cause power, water, and gas outages.



KNOW YOUR STORMS



A hurricane watch is issued 48 hours before hurricane conditions (sustained winds of 74 mph or greater) are possible within the specified area.

Begin to prepare - monitor alerts, check your emergency supplies, and gather any items you may need if you lose power.



A hurricane warning is issued 36 hours before hurricane conditions (sustained winds of 74 mph or greater) are expected within your specified area. If you haven't prepared already, NOW is the time.

Follow all emergency orders and evacuate immediately if ordered.

Meteorologists use the Saffir-Simpson Hurricane Wind Scale to categorize hurricanes. These categories (1-5) estimate weather conditions and potential damage. This scale does not take other potentially deadly hazards such as storm surges, flooding, and tornadoes into consideration.

THE SAFFIR-SIMPSON HURRICANE WIND SCALE

Hurricane Category	Sustained Winds (mph)	Potential Property Damage
1	74 - 95	Minimal
2	96 - 110	Moderate
3	111 - 129	Extensive
4	130 - 156	Extreme
5	≥157	Catastrophic

SPECIAL NEEDS ASSISTANCE

If you or a loved one have special needs and require help locating a shelter or transportation during storm-related emergencies, contact your county's emergency management agency and register with Florida's Special Needs Registry at FloridaDisaster.org.



Scan code or visit TampaElectric.com/StormCenter for hurricane preparation tips, safety reminders and more.

Follow us for the most current information:



888-223-0800

Don't be scared.

BE PREPARED.



A Storm Reference Guide from:



BE #STORMWISE

BEFORE THE STORM

- Create an Emergency Plan so you know how to contact your loved ones. Visit **Ready.gov/Plan** to learn how.
- Pack an Emergency Kit that includes your unique needs in mind. Go to **Ready.gov/Kit** to get started.
- Turn off and unplug non-essential electrical equipment and small appliances, including pool equipment, to avoid electric surge damage.
- Turn refrigerators and freezers to their coldest settings; consider making blocks of ice and storing them in coolers.
- If you evacuate, you may leave your natural gas on. Although you can turn off the supply valves of gas appliances, only qualified personnel should operate the main valve and address pilot light issues.

DURING THE STORM

- Stay informed with NOAA weather alert radio.
- Stay indoors and away from windows.

AFTER THE STORM

- Look for damage to your electric service system that may prevent power from being restored. A licensed electrician should make repairs if needed.
- **DO NOT** put debris in travel areas or near power poles.
- If your vehicle was submerged in water, have it inspected by an authorized service technician.

BE #STORMSAFE

FLOODWATERS

Stay out of floodwaters! They can hide energized power lines and other hazards.

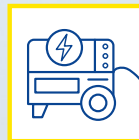
Visit your county's emergency management website to determine your flood and hurricane evacuation zones, get flood depth data, and flood insurance information, or help with property flood protection for residents.



Turn the electricity OFF at the main switch (fuse or circuit-breaker box) before floodwater enters your home.

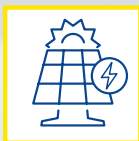
DO NOT use wet electrical appliances, or electrical appliances in or near water.

PORTABLE GENERATORS



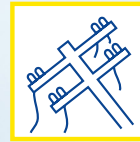
DO NOT operate portable generators near AC ducts, indoors or in enclosed areas, and do not connect them to home circuits. **NEVER** get your generator wet – a dry, outdoor space is required.

SOLAR PANELS



Avoid downed/damaged solar panels, wiring and components. Assume they are energized like a power line. Stay as far away as possible and call **911** for assistance.

POWER LINES



Avoid downed/damaged power lines. Stay as far away as possible. **DO NOT** touch anything the power lines are touching. Call **911** then call us at **877-588-1010**.



DO NOT trim trees or vegetation touching or near power lines. Contact a professional to avoid injury.

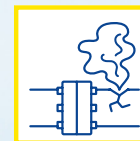


DO NOT fly drones near power lines. If the drone gets entangled with the power lines, **DO NOT** try to retrieve it. Call **911** then call us at **877-588-1010**.



If a downed power line contacts any part of your vehicle, stay inside and tell others to stay away until the line is safely removed, and power is turned off. If you must leave the car due to a life-threatening situation, **DO NOT** touch the car while getting out. Jump clear of the car and land on both feet. When your feet hit the ground, shuffle or hop away from the vehicle to a safe area. No part of your body should be touching the car when your feet hit the ground.

NATURAL GAS LEAKS



Smell rotten eggs? This may indicate a natural gas leak. Move away. Call **911** then call your natural gas provider.

BE #STORMREADY

To report an outage and get restoration updates:



Sign up at **TECOaccount.com**



Text **OUT, UPDATE** or **STATUS** to **27079***



Go to and bookmark **TampaElectric.com/Outage**



Scan this code to our outage map



Call **877-588-1010** and add to your contacts for future use.**

Write down your 12-digit Tampa Electric account number for future reference:

□□□□□□□□□□□□

* Message and data rates may apply. If the number you text from is not recognized, you will need to register to report outages and get updates.

** 12-digit account number and zip code required.