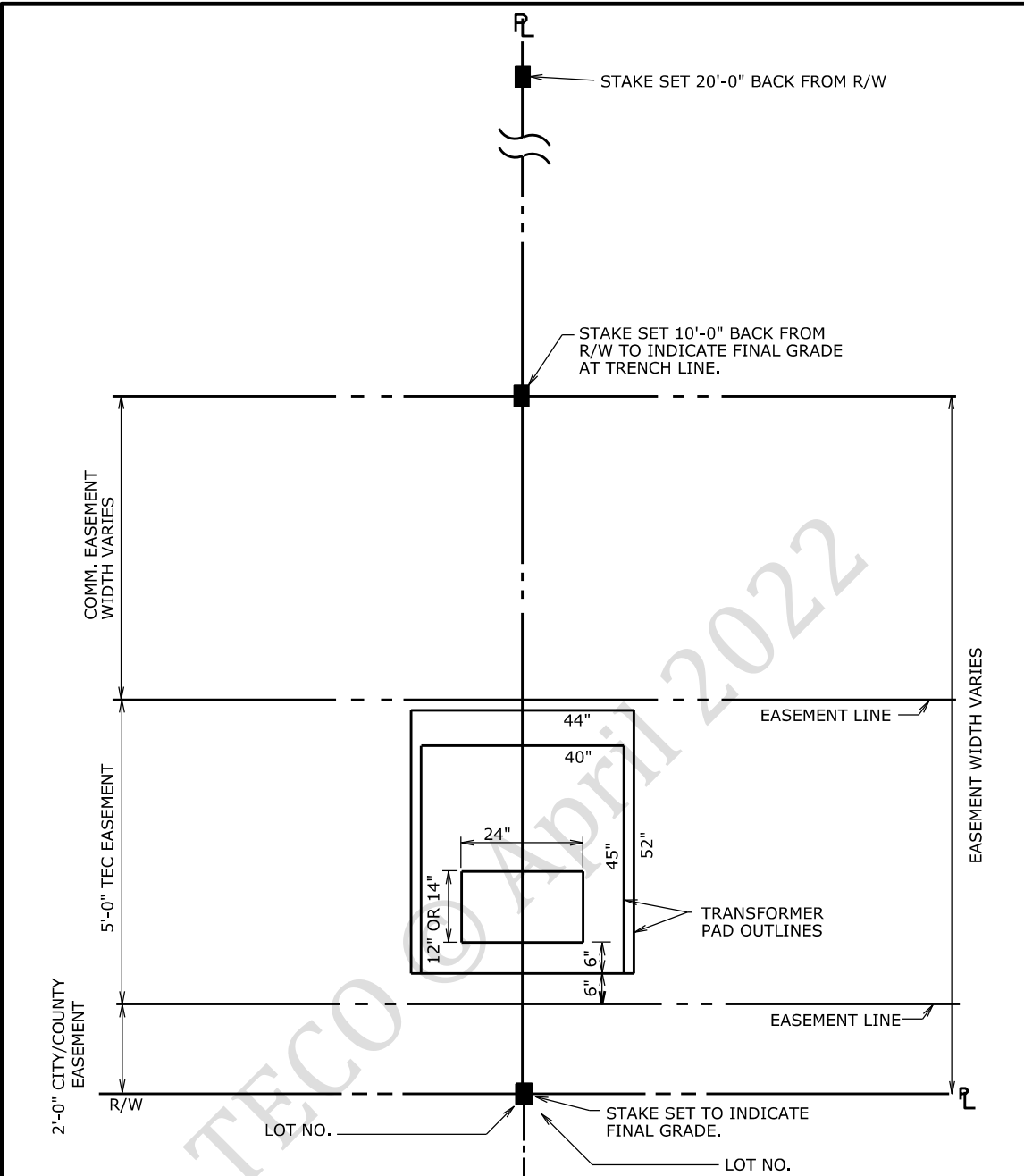


REFERENCES	
GR&S-UG	
STD. 1-43	
STD. 1-44	
STD. 6-11	
STD. 11-1	



NOTES:

1. ALL STAKES TO BE INSTALLED BY DEVELOPER.
2. STAKES & GRADE REQUIRED ON ALL STREET SIDE LOT CORNERS, ON CURVED PORTIONS OF R/W AT 50' INTERVALS, AND ANY R/W THAT WOULD EXCEED 100' WITHOUT STAKES.
3. STAKING REQUIRED FOR ALL TEC EQUIPMENT.
4. OFFSET STAKING REQUIRED FOR TEC EQUIPMENT - TRANSFORMERS, HANDHOLES, PULLBOXES, SWITCHGEAR/LBC, LIGHT

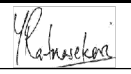


5. STAKES SHALL INCLUDE LOT NUMBERS ON EACH SIDE.

◀ DENOTES LATEST REVISION

NO.	CK'D	DATE	REVISION
3	RGH	4-22-20	REVISED NOTE 4 & ADDED LIGHT SYMBOL
2	RGH	6-06-18	ADDED NOTE 5.
1	RGH	6-17-17	NEW SPECIFICATION

POLK COUNTY SUBDIVISION STAKING REQUIREMENTS FOR ALL TEC EQUIPMENT IN EASEMENTS


 MGR, STD'S
 APPR. DATE 4-22-20
 SUPERSEDES 1-45/6-06-18