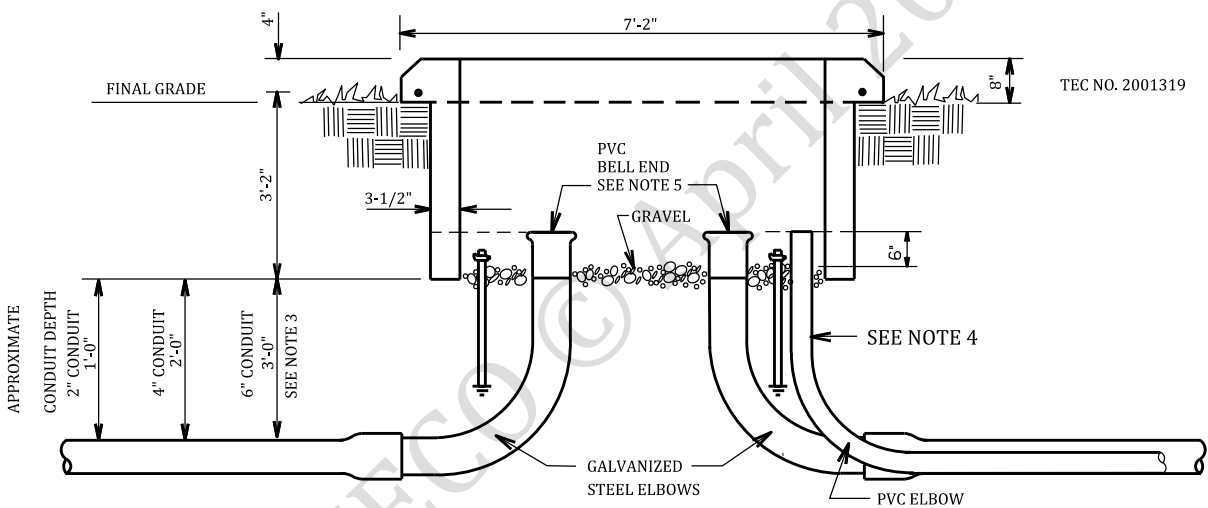
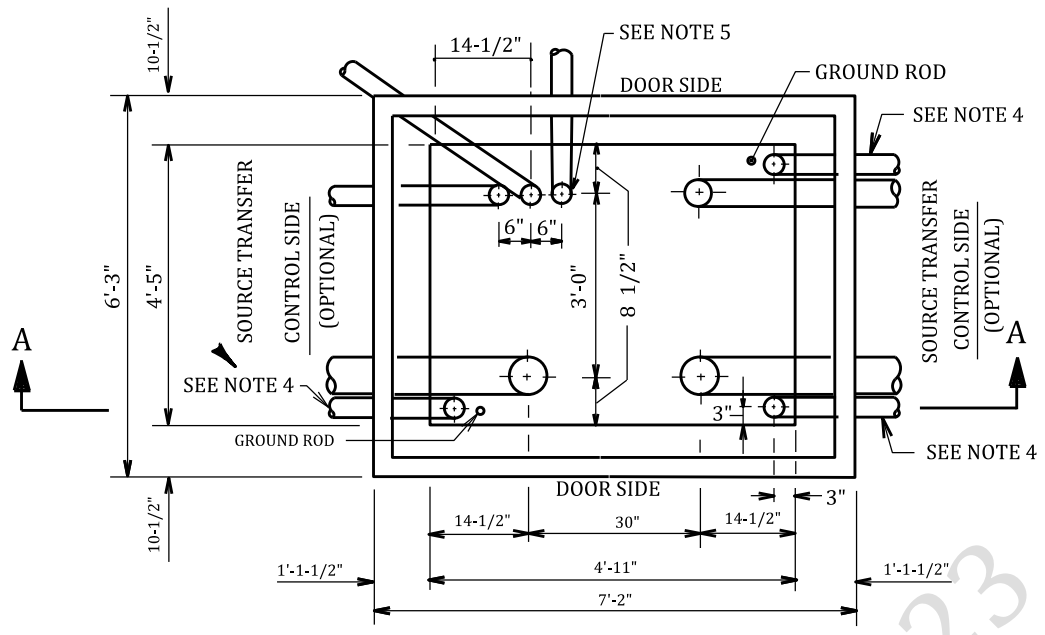


REFERENCES
GR & S 6-19



TEC NO. 2001319

**SECTION "A-A"**

**NOTES:**

1. TEC NO. 2001319 IS A TWO PIECE PRECAST PAD. THE PAD PORTION WEIGHS APPROXIMATELY 2,344 LBS. & THE BOX PORTION WEIGHS APPROXIMATELY 3,140 LBS. IF PRECAST PAD IS NOT AVAILABLE USE POURED IN PLACE PAD PER M-DRAWING #M-5155.
2. FULL RADIUS ELBOWS SHOULD BE USED ON ALL INSTALLATIONS.
3. ON 6" CONDUIT INSTALLATIONS WHERE FULL RADIUS ELBOWS CANNOT BE USED, USE PRECUT ELBOW TEC NO. 2004441.
4. USE 2" PVC CONDUIT(S) FOR REMOTE INDICATION/SUPERVISORY CONTROL IN AUTO GEAR. CONDUIT TO BE IN SWITCH COMPARTMENT BEHIND SOURCE-TRANSFER CONTROL CABINET.
5. FOR 4" CONDUIT USE 4" PVC BELL END TEC NO. 2004534 AND FOR 6" CONDUIT USE 6" PVC BELL END TEC NO. 2004563, FOR 2" GALVANIZED CONDUIT USE 2" PVC BELL END TEC NO. 2004494.
6. THIS SPECIFICATION SHALL BE USED WITH NEW TRAYER SWITCHGEAR INSTALLATIONS WHERE THERE IS NO EXISTING PIT. WHEN RETROFITTING EXISTING PME TO TRAYER SWITCHGEAR USE SPEC 6-19.

8	RGH	3-7-17	ADDED OPTIONAL CONTROL CONDUIT FOR TRAYER GEAR
7	RGH	7-20-16	REV. TITLE BLK., ADDED NOTE 6
6	JBL	7-30-14	RENUMBERED AND REVISED NOTE 3
5	JBL	7-30-14	REMOVE NOTE 3, ADDED SECOND GROUND ROD
NO.	CK'D	DATE	REVISION

◀ DENOTES LATEST REVISION

MGR: STD'S  
APPR. DATE 3-7-17  
SUPERSEDES 6-18/7-20-16

**▶ CONDUIT/PAD DETAILS  
600AMP-P.S.E. MULTI-COMPARTMENT  
GANG-OPERATED, LIVE-FRONT**

**6-18**