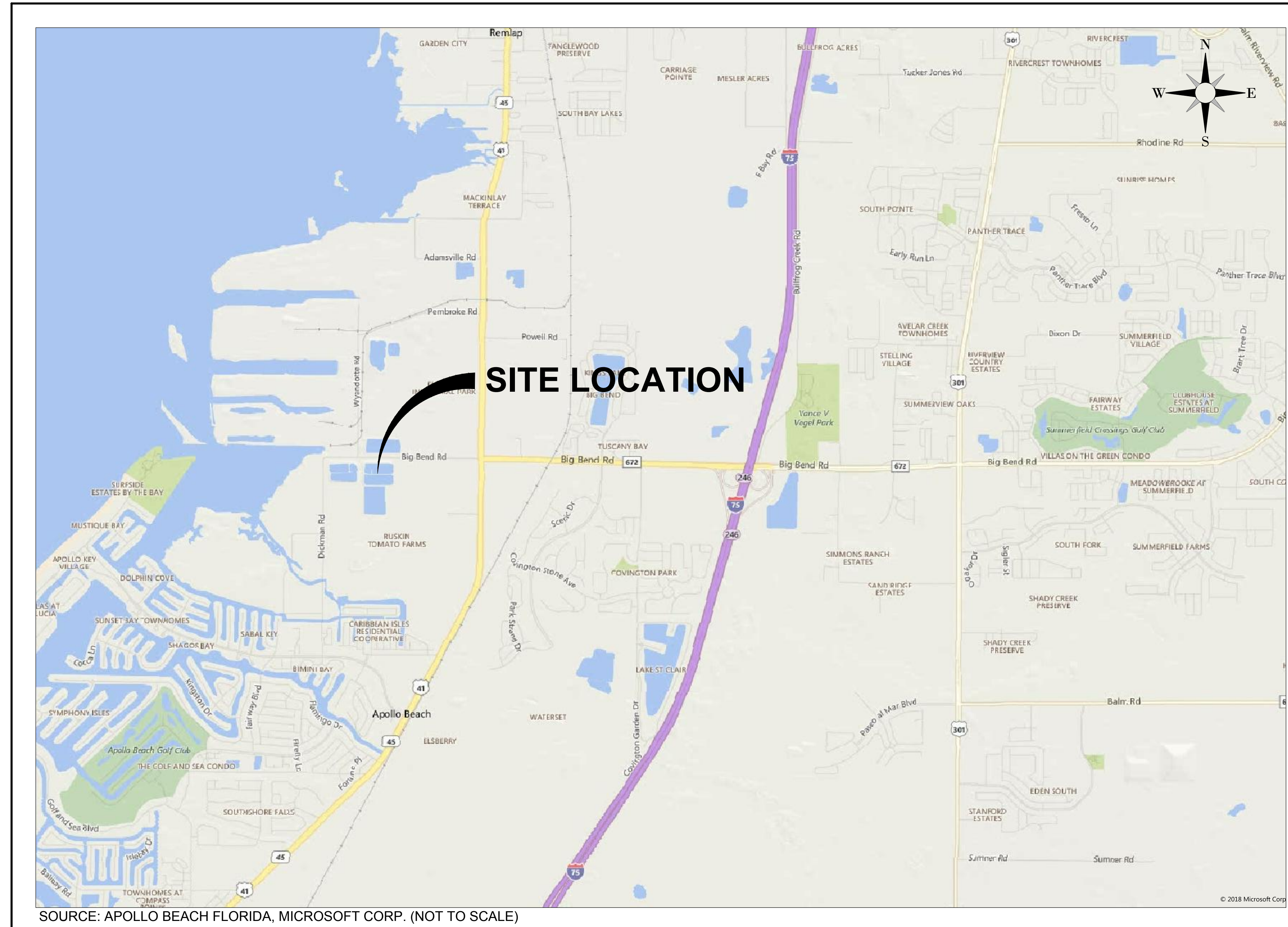


CONSTRUCTION PLANS FOR: TAMPA ELECTRIC COMPANY BIG BEND ECONOMIZER ASH AND PYRITES POND SYSTEM CLOSURE FOR AGENCY REVIEW

APOLLO BEACH, HILLSBOROUGH COUNTY, FLORIDA

WOOD PROJECT NUMBER: 300996x2

March 22, 2019



SITE LOCATION MAP

**HILLSBOROUGH COUNTY, FLORIDA
SECTION 9, TOWNSHIP 31 SOUTH, RANGE 19 EAST**

INDEX OF DRAWINGS	
SHEET NUMBER	TITLE
1	COVER SHEET
2	DEMOLITION NOTES
3	OVERALL SITE PLAN
4	DEMOLITION PLAN LAYOUT
5	NORTHWEST DEMOLITION AREA
6	NORTHEAST DEMOLITION AREA
7	SOUTHWEST DEMOLITION AREA
8	SOUTHEAST DEMOLITION AREA
9	POST CLOSURE GRADING PLAN
10	BERM RESTORATION PLAN & DETAILS
11	ANCHOR DETAIL

ATTENTION IS DIRECTED TO THE FACT THAT THESE PLANS MAY HAVE BEEN REDUCED IN SIZE BY REPRODUCTION. THIS MUST BE CONSIDERED WHEN OBTAINING SCALED DATA.

CONTRACTOR IS TO VERIFY EXISTING CONDITIONS PRIOR TO CONSTRUCTION.

NOTE:
CONSTRUCTION PLANS ARE AVAILABLE IN AUTODESK CIVIL 3D FORMAT ONLY. ANY FILE CONVERSIONS WILL BE AT THE CONTRACTOR'S EXPENSE.

ENGINEER CERTIFICATION

I HEREBY CERTIFY THAT I AM A REGISTERED PROFESSIONAL ENGINEER IN THE STATE OF FLORIDA PRACTICING WITH WOOD ENVIRONMENT & INFRASTRUCTURE SOLUTIONS, INC., A CORPORATION AUTHORIZED TO OPERATE AS A BUSINESS PROVIDING ENGINEERING CONSULTING SERVICES, FLORIDA REGISTERED ENGINEERING FIRM F-12, BY THE STATE OF FLORIDA BOARD OF PROFESSIONAL ENGINEERS. I FURTHER CERTIFY THAT I, OR OTHERS UNDER MY DIRECT SUPERVISION, HAVE PREPARED THE GEOTECHNICAL ENGINEERING EVALUATIONS, FINDINGS, CALCULATIONS, CONCLUSIONS OR TECHNICAL ADVICE HEREBY REPRESENTED IN THESE PLANS.

SIGNATURE: Tanel Andry
NAME: TANEL NURIYE-ESIN ANDRY, P.E.
P.E. NUMBER: 56775
DATE: 03-22-2019

PLANS PREPARED BY:

wood.
Environment & Infrastructure Solutions, Inc.
1101 Chalmers Drive, Suite 200, Tampa, FL 33602
Phone: 1-813-289-9750 Fax: 1-813-289-5474
www.woodcs.com CA-5392

**NOT FOR
CONSTRUCTION**

GENERAL NOTES

1. ALL CONSTRUCTION SHALL CONFORM TO THE CONSTRUCTION DRAWINGS AND OWNER SPECIFICATIONS.
2. THE CONTRACTOR SHALL VERIFY ALL FIELD CONDITIONS PRIOR TO THE START OF WORK. DIMENSIONS PROVIDED ON THE DRAWINGS ARE APPROXIMATE, AND MUST BE VERIFIED. THE CONTRACTOR SHALL NOTIFY THE OWNER IN WRITING OF ANY CONDITIONS WHICH LIMIT THE CONTRACTOR'S ABILITY TO PERFORM THE WORK AS INTENDED.
3. THE CONTRACTOR SHALL COMPLY WITH THE APPROVED SWP3 PLAN.
4. THE CONTRACTOR SHALL ACQUIRE THE NECESSARY RIGHT-OF-WAY UTILIZATION PERMIT(S) AND PROVIDE FOR THE SAFETY OF LOCAL TRAFFIC DURING CONSTRUCTION. THE CONTRACTOR SHALL COORDINATE ALL WORK WITHIN EXISTING ROAD RIGHT-OF-WAYS WITH FDOT.
5. THE LOCATION OF ALL EXISTING UTILITIES, STORM DRAINAGE SYSTEMS AND TOPOGRAPHIC FEATURES SHOWN ON THE DRAWINGS ARE PROVIDED FOR THE CONVENIENCE OF THE CONTRACTOR. THE ENGINEER ASSUMES NO RESPONSIBILITY FOR THEIR ACCURACY. SHOULD A DISCREPANCY ARISE BETWEEN THESE DRAWINGS AND ACTUAL FIELD CONDITIONS, WHICH WOULD APPRECIABLY AFFECT THE EXECUTION OF THE WORK, THE CONTRACTOR WILL HALT AFFECTED CONSTRUCTION AND NOTIFY THE OWNER AND ENGINEER IMMEDIATELY.
6. THE CONTRACTOR SHALL BE RESPONSIBLE FOR LOCATING AND VERIFYING ALL EXISTING UTILITIES PRIOR TO CONSTRUCTION, AND FOR NOTIFYING THE VARIOUS UTILITY PROVIDERS TO MAKE THE NECESSARY ARRANGEMENTS FOR ANY RELOCATION, TEMPORARY DISRUPTION OF SERVICE, OR CLARIFICATION OF ACTIVITY REGARDING SAID UTILITY. THE CONTRACTOR SHALL EXERCISE EXTREME CAUTION WHEN CROSSING AN UNDERGROUND UTILITY, WHETHER SHOWN ON THESE PLANS OR FIELD LOCATED. ALL UTILITIES WHICH INTERFERE WITH THE PROPOSED CONSTRUCTION SHALL BE RELOCATED BY THE RESPECTIVE UTILITY PROVIDERS AND THE CONTRACTOR SHALL COOPERATE WITH THE UTILITY PROVIDER DURING RELOCATION OPERATIONS. ANY DELAY OR INCONVENIENCE BY THE VARIOUS UTILITIES SHALL BE INCIDENTAL TO THE CONTRACT AND NO EXTRA COMPENSATION WILL BE ALLOWED.
7. ALTHOUGH UTILITIES HAVE BEEN RELOCATED BY OWNER OR LOCAL UTILITY PRIOR TO CONSTRUCTION, IT IS THE CONTRACTOR'S RESPONSIBILITY TO EXECUTE ALL OPERATIONS WITH CARE NOT TO DAMAGE OR DISRUPT ANY UTILITIES OF THE ADJACENT FACILITIES. THE CONTRACTOR SHALL VERIFY WITH THE OWNER THE STATE OF ANY PIPES, BOXES, CONDUITS, CABLE TRAYS OR OTHER MEDIUM USED FOR CONVEYANCE PRIOR TO REMOVAL OR BREACH.
8. THE CONTRACTOR SHALL MAINTAIN FREE AND UNOBSTRUCTED MOVEMENT OF VEHICULAR & PEDESTRIAN TRAFFIC FOR THOSE AREAS OUTSIDE THE LIMITS OF CONSTRUCTION OR ADJACENT AREAS USED FOR LOADING AND SUPPORT OPERATIONS.
9. ALL WORK SHALL BE IN ACCORDANCE WITH OWNER'S SAFETY REQUIREMENTS, INCLUDING USE OF EQUIPMENT NEAR/UNDER EXISTING OVERHEAD LINES.
10. SAFETY SHALL BE THE MOST IMPORTANT CONSIDERATION. LIMITS OF CONSTRUCTION AND THE WORK AREA SHALL BE CLEARLY MARKED WITH WARNING SIGNS, MARKINGS FOR HAZARDS AND BARRICADED FROM NORMAL ACCESS TO PROTECT THE PUBLIC, OWNER'S OPERATIONS, AND THE WORK.
11. PRIOR TO COMMENCING WORK THE CONTRACTOR SHALL FURNISH, ERECT AND MAINTAIN ALL BARRICADES, WARNING SIGNS, AND MARKINGS FOR HAZARDS AND THE CONTROL OF TRAFFIC, IN REASONABLE CONFORMITY WITH THE MANUAL OF UNIFORM TRAFFIC CONTROL DEVICES FOR STREET AND HIGHWAYS OR AS DIRECTED BY THE OWNER, SUCH AS TO EFFECTIVELY PREVENT ACCIDENTS IN ALL PLACES WHERE THE WORK CAUSES OBSTRUCTIONS TO THE NORMAL TRAFFIC OR CONSTITUTES IN ANY WAY A HAZARD TO THE PUBLIC OR OWNER'S OPERATIONS.
12. THE CONTRACTOR SHALL FURNISH AND SECURE IN PLACE ALL SUPPLEMENTARY BRACING, EQUIPMENT, ETC. NECESSARY TO MAINTAIN THE STABILITY OF ANY STRUCTURAL MEMBERS OR THE STRUCTURAL SYSTEM DURING ALL OPERATIONS AND PHASES OF THE WORK. THE ENGINEER SHALL BE NOTIFIED OF ANY CONDITIONS WHICH RAISE CONCERN FOR THE SAFETY OR STABILITY OF THE STRUCTURE.
13. CONTRACTOR TO COORDINATE WITH OWNER FOR REMOVAL OF ANY MONITORING WELLS.
14. COORDINATE WITH TEC BEFORE COMMENCING ANY WORK UNDER / WITHIN 25' OF POWER LINES.
15. ALL WORK AND MATERIALS FURNISHED SHALL CONFORM WITH THE LINES, GRADES, GRADING SECTIONS, CROSS SECTIONS, DIMENSIONS, MATERIAL REQUIREMENTS, AND TESTING REQUIREMENTS THAT ARE SPECIFIED IN THE CONTRACT, PLANS OR SPECIFICATIONS.
16. THE CONTRACTOR IS TO FURNISH, ERECT, AND MAINTAIN ALL BARRICADES, WARNING SIGNS, AND MARKINGS FOR HAZARDS NECESSARY TO PROTECT THE PUBLIC, OWNER'S OPERATIONS, AND THE WORK.

SURVEY NOTES:

1. ELEVATIONS ARE SHOWN IN TEC PLANT DATUM. TO CONVERT TO NAVD88, SUBTRACT 1.971 FT FROM THE PLANT DATUM. TO CONVERT PLANT DATUM TO NAVD29, SUBTRACT 1.072 FT FROM PLANT DATUM.
2. CONCEPTUAL MAP, ELEVATIONS AND FEATURE LOCATIONS ARE BASED ON SURVEY DATA PROVIDED BY GEORGE F. YOUNG INC. DATED NOVEMBER 8, 2018 AND SUPPLEMENTED BY GEORGE F. YOUNG INC. SURVEY DATED SEPTEMBER, 28, 2007.
3. CONTRACTOR TO COORDINATE WITH THE OWNER TO VERIFY EXISTING SURVEY MONUMENTS.
4. EXISTING CONDITIONS AT START OF PHASE II WILL REPRESENT CONDITIONS AFTER ALL ASH HAS BEEN REMOVED FROM NEAP AND SEAP, AND ALL LINER AND DEMOLITION HAS OCCURRED WITHIN THE EAPPS WITH THE EXCEPTION OF THE NORTH BERM OF THE LTFAP. DEMOLITION OF STRUCTURES AND LINER REMOVAL FROM THE NORTH BERM OF THE LTFAP WILL BE COMPLETED DURING PHASE II.
5. FOR EXISTING CONDITIONS, GEORGE F. YOUNG SURVEY DATED 11/8/18 WAS USED AS A BASE. THE INTERIORS OF THE PONDS WERE APPROXIMATED BY EXTENDING THE INTERIOR SURVEYED SLOPES DOWN AT A SLOPE OF 2.6:1 TO THE ELEVATIONS SHOWN IN STONE & WEBSTER ENGINEERING CORPORATION DRAWING NUMBER 12408-EP-66R-5 LAST REVISED 1/10/84.

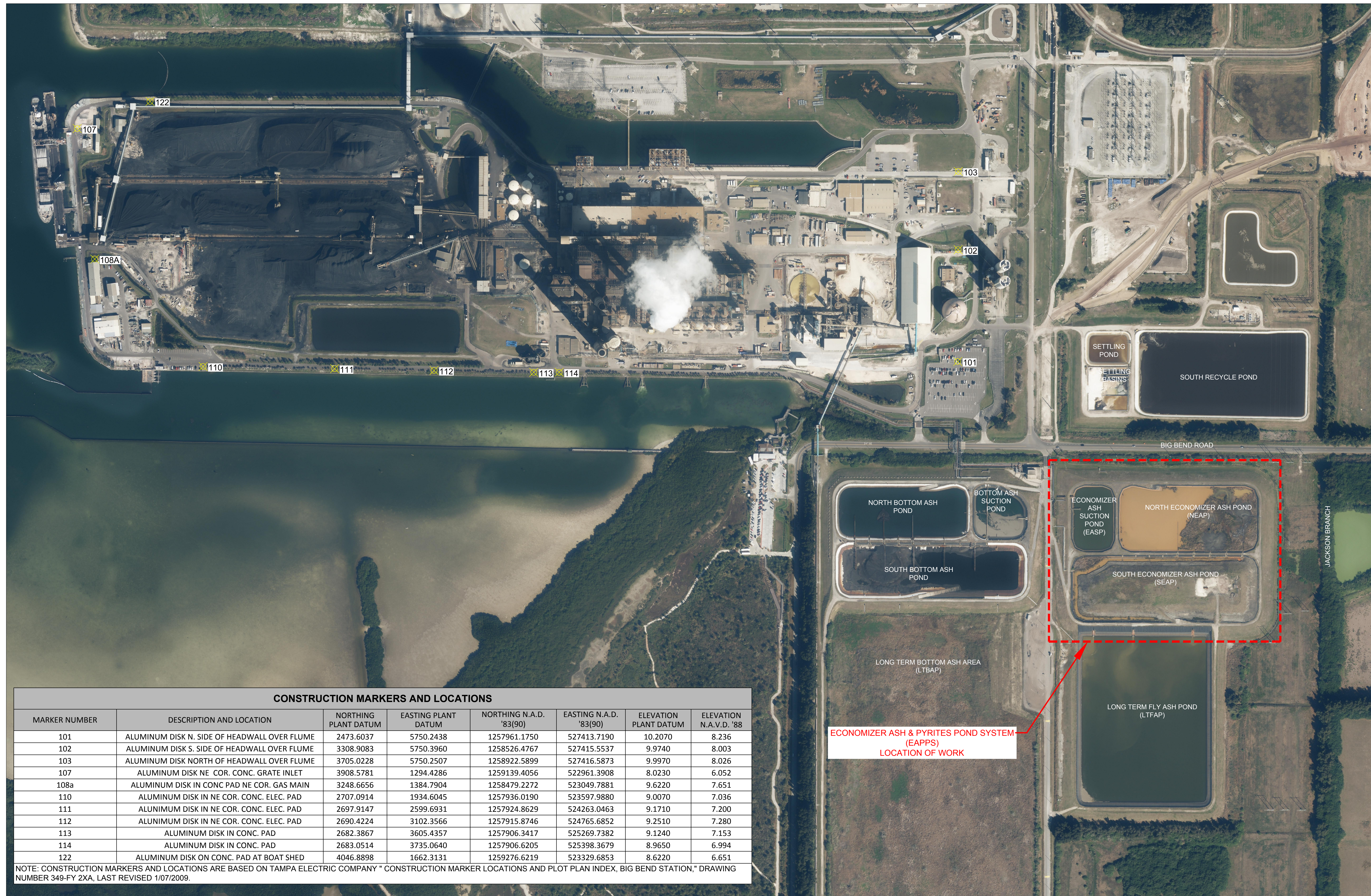
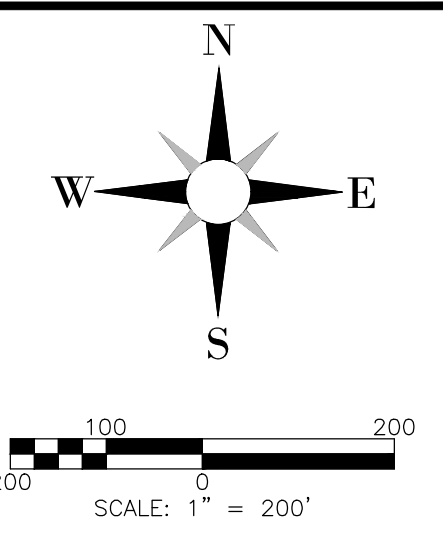
**NOT FOR
CONSTRUCTION**

NO.	DATE	REVISION

wood.
Environment & Infrastructure Solutions, Inc.
1570 Centennial Drive, Suite 205, Tampa, FL 33622
Phone: (813) 284-2222 Fax: (813) 284-2274
www.woodgroup.com

TAMPA ELECTRIC CO.
BIG BEND POWER STATION
ECONOMIZER ASH & PYRITES POND SYSTEM
DEMOLITION NOTES
APOLLO BEACH, FLORIDA

DATE: March 22, 2019
DRAWN BY: M. VIVES
CHECKED BY: T. ANDRY
PROJECT NO.: 300996X2



CONSTRUCTION MARKERS AND LOCATIONS

MARKER NUMBER	DESCRIPTION AND LOCATION	NORTHING PLANT DATUM	EASTING PLANT DATUM	NORTHING N.A.D. '83(90)	EASTING N.A.D. '83(90)	ELEVATION PLANT DATUM	ELEVATION N.A.V.D. '88
101	ALUMINUM DISK N. SIDE OF HEADWALL OVER FLUME	2473.6037	5750.2438	1257961.1750	527413.7190	10.2070	8.236
102	ALUMINUM DISK S. SIDE OF HEADWALL OVER FLUME	3308.9083	5750.3960	1258526.4767	527415.5537	9.9740	8.003
103	ALUMINUM DISK NORTH OF HEADWALL OVER FLUME	3705.0228	5750.2507	1258922.5899	527416.5873	9.9970	8.026
107	ALUMINUM DISK NE COR. CONC. GRATE INLET	3908.5781	1294.4286	1259139.4056	522961.3908	8.0230	6.052
108a	ALUMINUM DISK IN CONC PAD NE COR. GAS MAIN	3248.6656	1384.7904	1258479.2272	523049.7881	9.6220	7.651
110	ALUMINUM DISK IN NE COR. CONC. ELEC. PAD	2707.0914	1934.6045	1257936.0190	523597.9880	9.0070	7.036
111	ALUMINUM DISK IN NE COR. CONC. ELEC. PAD	2697.9147	2599.6931	1257924.8629	524263.0463	9.1710	7.200
112	ALUMINUM DISK IN NE COR. CONC. ELEC. PAD	2690.4224	3102.3566	1257915.8746	524765.6852	9.2510	7.280
113	ALUMINUM DISK IN CONC. PAD	2682.3867	3605.4357	1257906.3417	525269.7382	9.1240	7.153
114	ALUMINUM DISK IN CONC. PAD	2683.0514	3735.0640	1257906.6205	525398.3679	8.9650	6.994
122	ALUMINUM DISK ON CONC. PAD AT BOAT SHED	4046.8898	1662.3131	1259276.6219	523329.6853	8.6220	6.651

NOTE: CONSTRUCTION MARKERS AND LOCATIONS ARE BASED ON TAMPA ELECTRIC COMPANY " CONSTRUCTION MARKER LOCATIONS AND PLOT PLAN INDEX, BIG BEND STATION," DRAWING NUMBER 349-FY 2XA, LAST REVISED 1/07/2009.

SOURCE: FDOT 2014 (HIL2010_474066)

NOT FOR CONSTRUCTION

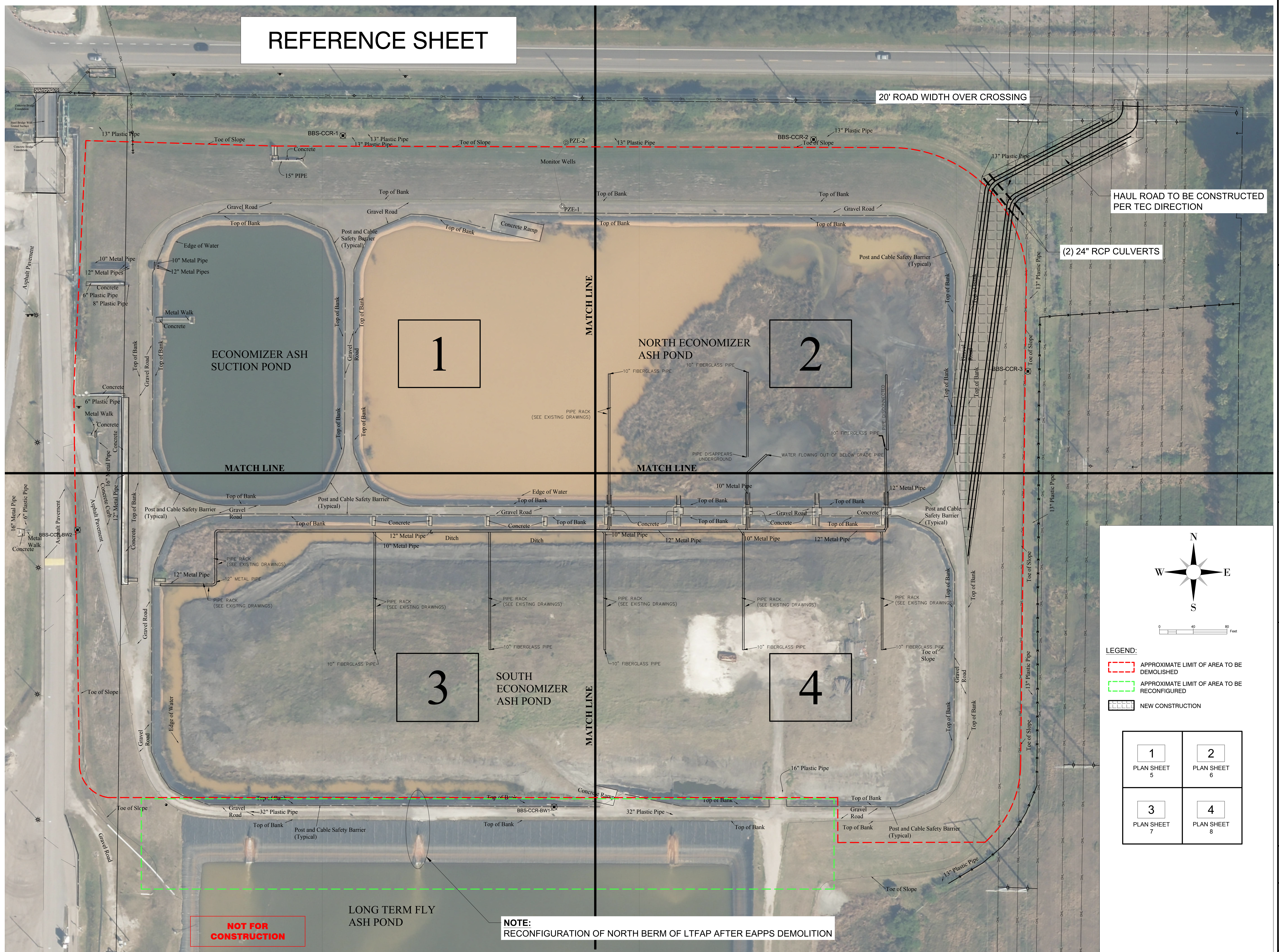
NO.	DATE	REVISION

wood.
 Environment & Infrastructure Solutions, Inc.
 1510 Chokoloskee Drive, Suite 200, Tampa, FL 33622
 Phone: 813.289.1000 Fax: 813.289.1044
 www.woodsolutions.com

TAMPA ELECTRIC CO.
 BIG BEND POWER STATION
 ECONOMIZER ASH & PYRITES POND SYSTEM
 OVERALL SITE PLAN
 APOLLO BEACH, FLORIDA

DATE: March 22, 2019
 DRAWN BY: M. VIVES
 CHECKED BY: T. ANDRY
 PROJECT NO.: 300996X2

REFERENCE SHEET



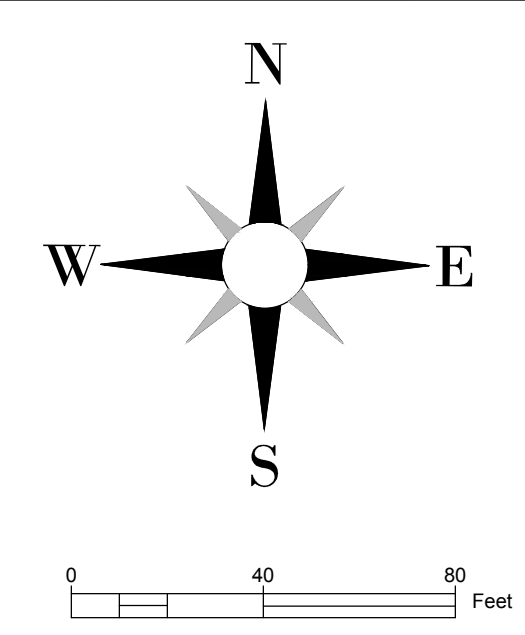
20' ROAD WIDTH OVER CROSSING

HAUL ROAD TO BE CONSTRUCTED PER TEC DIRECTION

(2) 24" RCP CULVERTS

NOT FOR CONSTRUCTION

NOTE:
RECONFIGURATION OF NORTH BERM OF LTFAP AFTER EAPPS DEMOLITION



- LEGEND:**
- APPROXIMATE LIMIT OF AREA TO BE DEMOLISHED
 - APPROXIMATE LIMIT OF AREA TO BE RECONFIGURED
 - NEW CONSTRUCTION

1 PLAN SHEET 5	2 PLAN SHEET 6
3 PLAN SHEET 7	4 PLAN SHEET 8

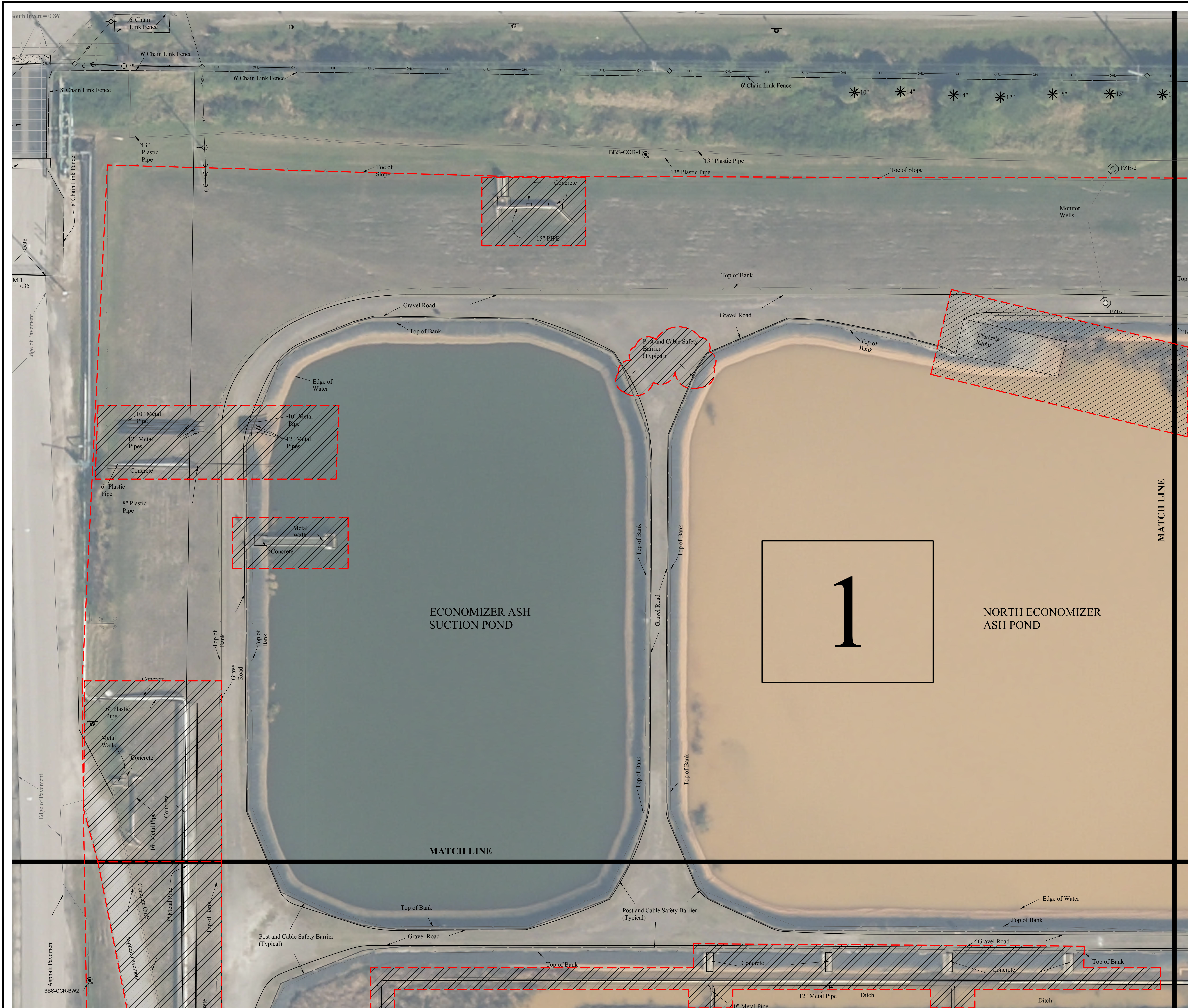
NO.	DATE	REVISION

wood.
Environment & Infrastructure Solutions, Inc.
1510 Chokoloskee Drive, Suite 200, Fort Myers, FL 33902
Phone: 813.435.1000
www.woodgroup.com

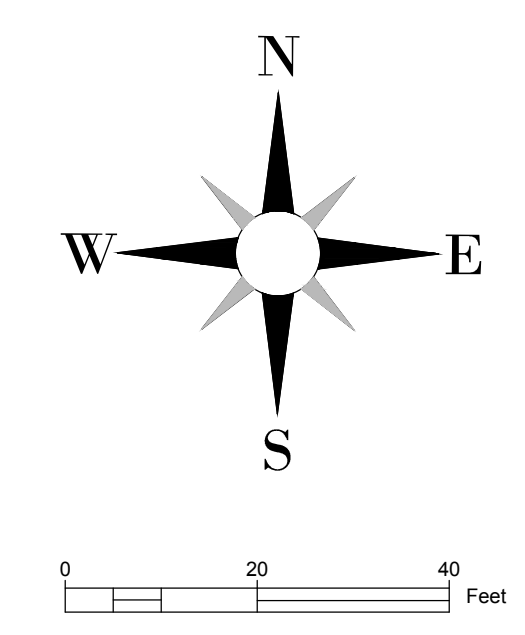
**TAMPA ELECTRIC CO.
BIG BEND POWER STATION
ECONOMIZER ASH & PYRITES POND SYSTEM
DEMOLITION PLAN LAYOUT
APOLLO BEACH, FLORIDA**

DATE: March 22, 2019
DRAWN BY: M. VIVES
CHECKED BY: T. ANDRY
PROJECT NO.: 300996X2

SOURCE: BASE MAP SURVEY BY GEORGE F. YOUNG, INC. DATED 11/8/2018, SUPPLEMENTED BY GEORGE F. YOUNG SURVEY DATED SEPTEMBER 28, 2007.



NOT FOR CONSTRUCTION

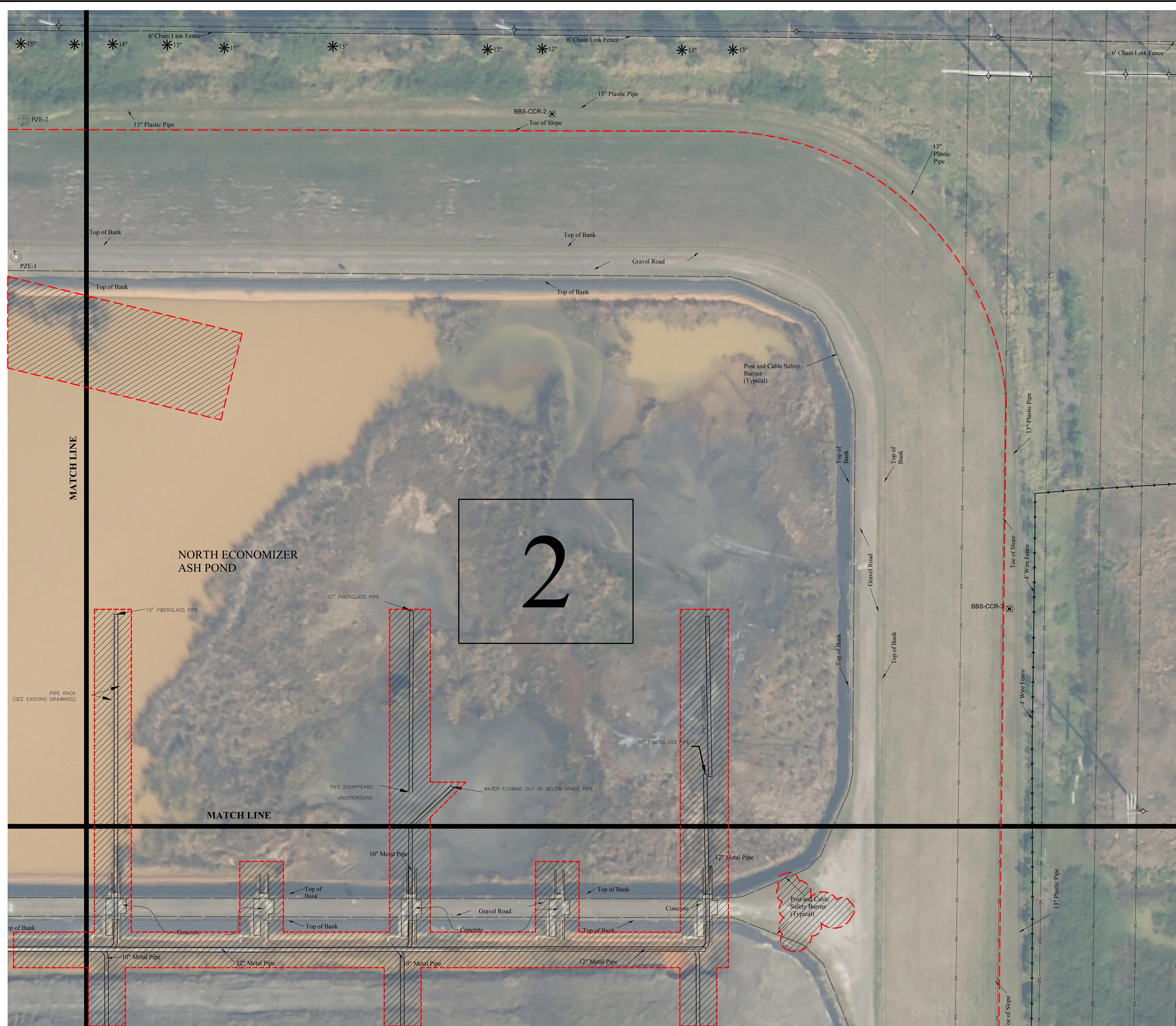


LEGEND:
 FEATURE TO BE DEMOLISHED

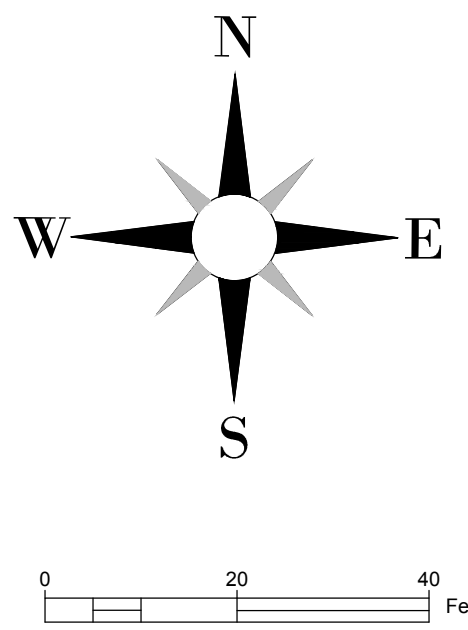
1 PLAN SHEET 5	2 PLAN SHEET 6
3 PLAN SHEET 7	4 PLAN SHEET 8

<h1 style="font-size: 48pt; margin: 0;">1</h1>	<p>TAMPA ELECTRIC CO. BIG BEND POWER STATION</p> <p>ECONOMIZER ASH & PYRITES POND SYSTEM NORTHWEST DEMOLITION AREA APOLLO BEACH, FLORIDA</p>						
<p>wood. <small>Environment & Infrastructure Solutions, Inc. 1510 Chokoloskee Island Road, Apollo Beach, FL 34622 Phone: 727.842.1000 www.woodgroup.com</small></p>	<table border="1" style="width: 100%; border-collapse: collapse;"> <tr> <th style="width: 50%;">NO.</th> <th style="width: 50%;">DATE</th> <th style="width: 50%;">REVISION</th> </tr> <tr> <td> </td> <td> </td> <td> </td> </tr> </table>	NO.	DATE	REVISION			
NO.	DATE	REVISION					
<p>DATE: March 22, 2019 DRAWN BY: M. VIVES CHECKED BY: T. ANDRY PROJECT NO.: 300996X2</p>							
<p>5</p>							

SOURCE: BASE MAP SURVEY BY GEORGE F. YOUNG, INC. DATED 11/8/2018, SUPPLEMENTED BY GEORGE F. YOUNG SURVEY DATED SEPTEMBER 28, 2007.




**NOT FOR
CONSTRUCTION**

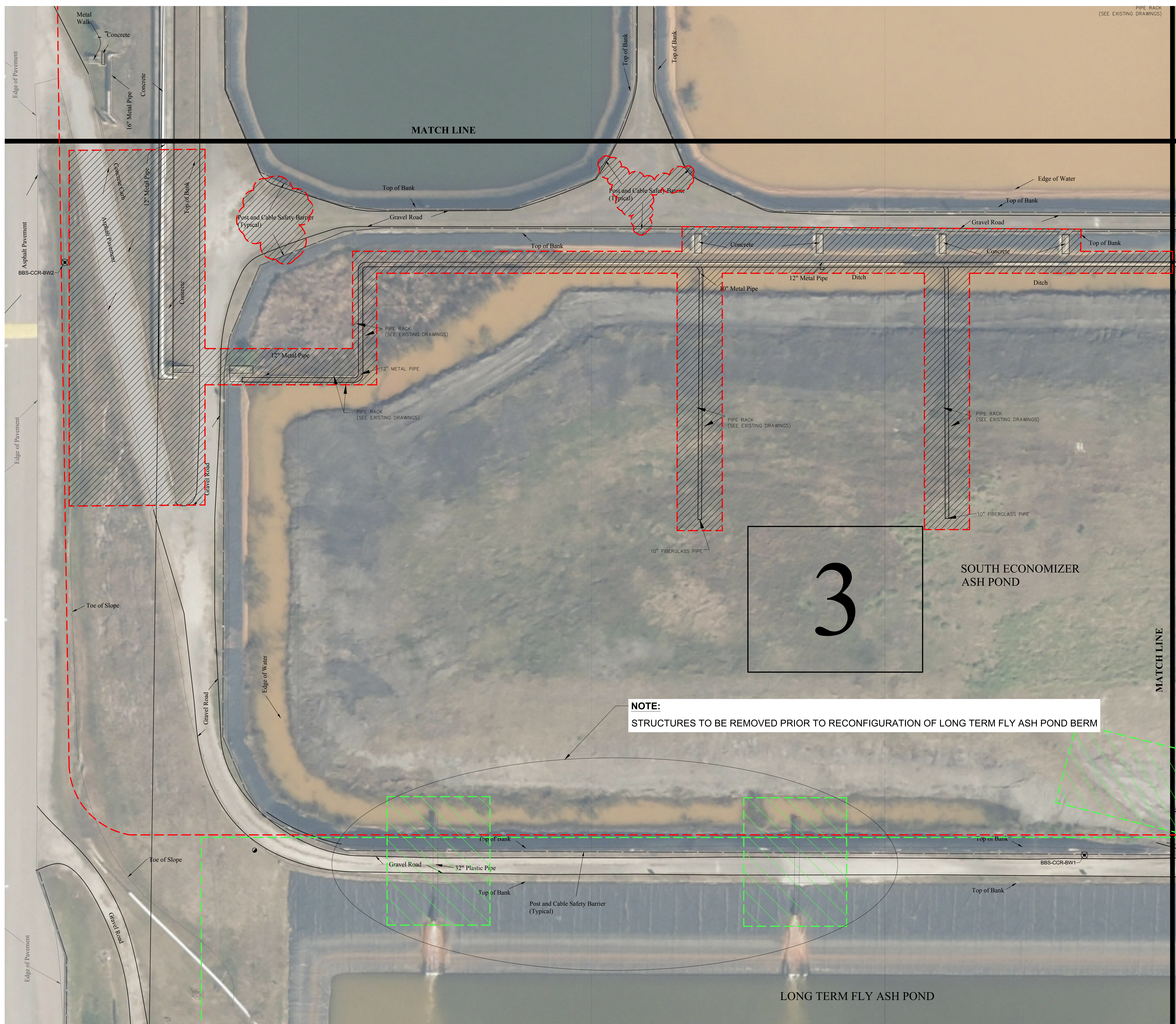


LEGEND:
 FEATURE TO BE DEMOLISHED

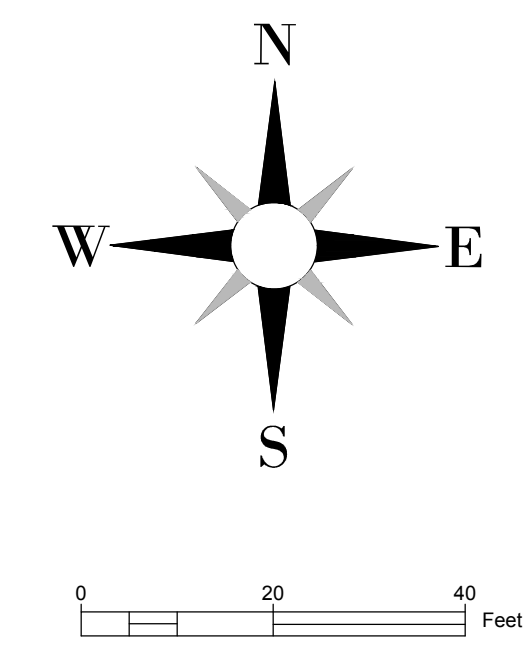
1 PLAN SHEET 5	2 PLAN SHEET 6
3 PLAN SHEET 7	4 PLAN SHEET 8

SOURCE: BASE MAP SURVEY BY GEORGE F. YOUNG, INC. DATED 11/8/2018, SUPPLEMENTED BY GEORGE F. YOUNG SURVEY DATED SEPTEMBER 28, 2007.

 Environment & Infrastructure Solutions, Inc. 1510 Chokoloskee Road, Suite 200, Venice, FL 33592 Phone: 813.486.1500 Fax: 813.486.1501 www.woodgroup.com	
TAMPA ELECTRIC CO. BIG BEND POWER STATION ECONOMIZER ASH & PYRITES POND SYSTEM NORTHEAST DEMOLITION AREA APOLLO BEACH, FLORIDA	
DATE: March 22, 2019 DRAWN BY: M. VIVES CHECKED BY: T. ANDRY PROJECT NO.: 300996X2	NO. DATE REVISION
6	



NOT FOR CONSTRUCTION



NOTE:
STRUCTURES TO BE REMOVED PRIOR TO RECONFIGURATION OF LONG TERM FLY ASH POND BERM

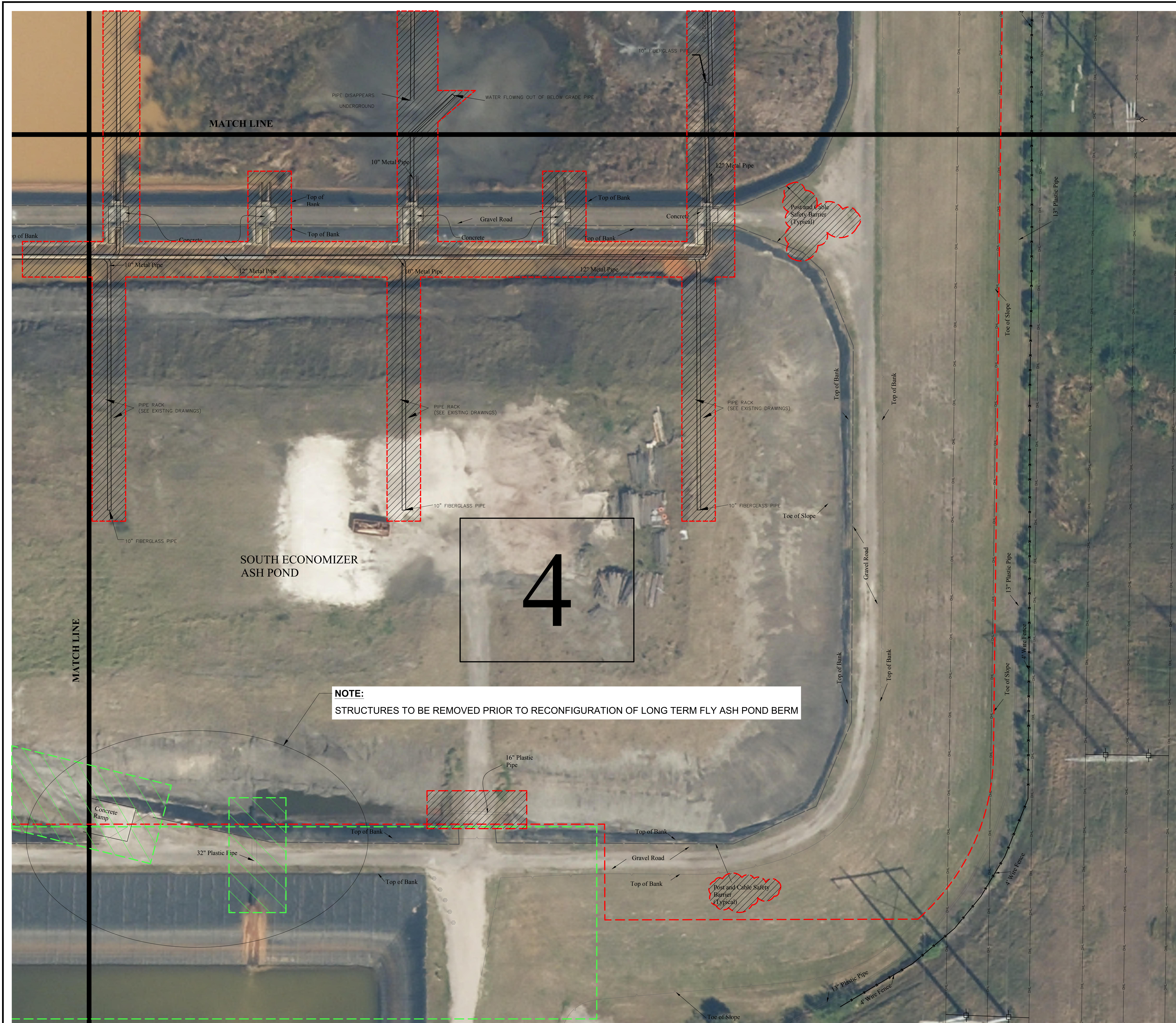
LEGEND:
 FEATURE TO BE DEMOLISHED
 FEATURE TO BE RECONFIGURED

1 PLAN SHEET 5	2 PLAN SHEET 6
3 PLAN SHEET 7	4 PLAN SHEET 8

SOURCE: BASE MAP SURVEY BY GEORGE F. YOUNG, INC. DATED 11/8/2018, SUPPLEMENTED BY GEORGE F. YOUNG SURVEY DATED SEPTEMBER 28, 2007.

<h1 style="font-size: 48pt; margin: 0;">3</h1> <p style="margin: 0;">SOUTH ECONOMIZER ASH POND</p>	<p style="text-align: center;">NO. DATE</p> <p style="text-align: center;">REVISION</p>
<p>TAMPA ELECTRIC CO. BIG BEND POWER STATION</p> <p>ECONOMIZER ASH & PYRITES POND SYSTEM SOUTHWEST DEMOLITION AREA APOLLO BEACH, FLORIDA</p>	
<p>DATE: March 22, 2019 DRAWN BY: M. VIVES CHECKED BY: T. ANDRY PROJECT NO.: 300996X2</p>	
7	

NOT FOR CONSTRUCTION



MATCH LINE

SOUTH ECONOMIZER
ASH POND

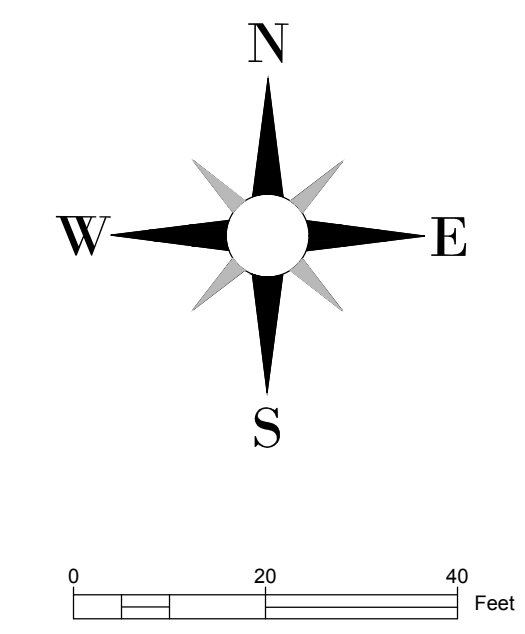
4

NOTE:
STRUCTURES TO BE REMOVED PRIOR TO RECONFIGURATION OF LONG TERM FLY ASH POND BERM

LEGEND:

- FEATURE TO BE DEMOLISHED
- FEATURE TO BE RECONFIGURED

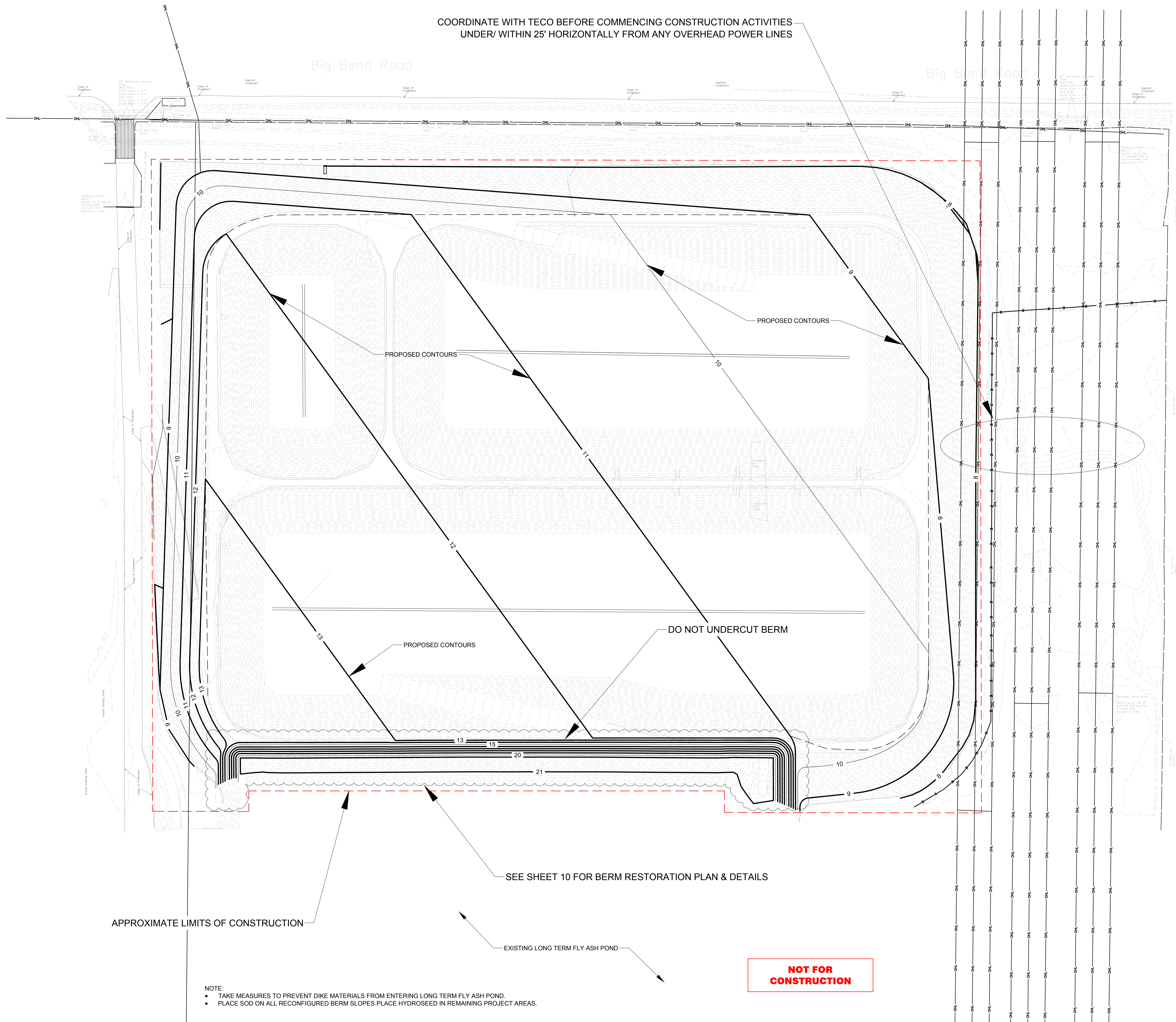
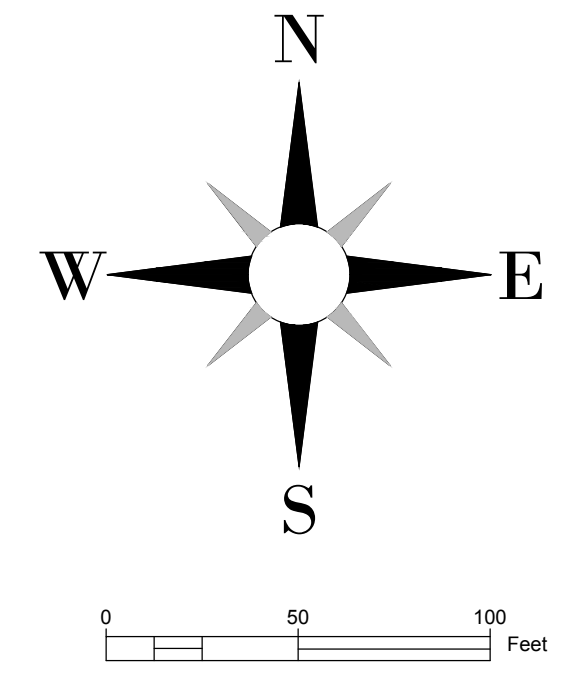
1 PLAN SHEET 5	2 PLAN SHEET 6
3 PLAN SHEET 7	4 PLAN SHEET 8



SOURCE: BASE MAP SURVEY BY GEORGE F. YOUNG, INC. DATED 11/8/2018, SUPPLEMENTED BY GEORGE F. YOUNG SURVEY DATED SEPTEMBER 28, 2007.

	TAMPA ELECTRIC CO. BIG BEND POWER STATION ECONOMIZER ASH & PYRITES POND SYSTEM SOUTHEAST DEMOLITION AREA APOLLO BEACH, FLORIDA
DATE: March 22, 2019 DRAWN BY: M. VIVES CHECKED BY: T. ANDRY PROJECT NO.: 300996X2	NO. DATE REVISION
8	

COORDINATE WITH TECO BEFORE COMMENCING CONSTRUCTION ACTIVITIES
UNDER/ WITHIN 25' HORIZONTALLY FROM ANY OVERHEAD POWER LINES



APPROXIMATE LIMITS OF CONSTRUCTION

SEE SHEET 10 FOR BERM RESTORATION PLAN & DETAILS

EXISTING LONG TERM FLY ASH POND

NOT FOR CONSTRUCTION

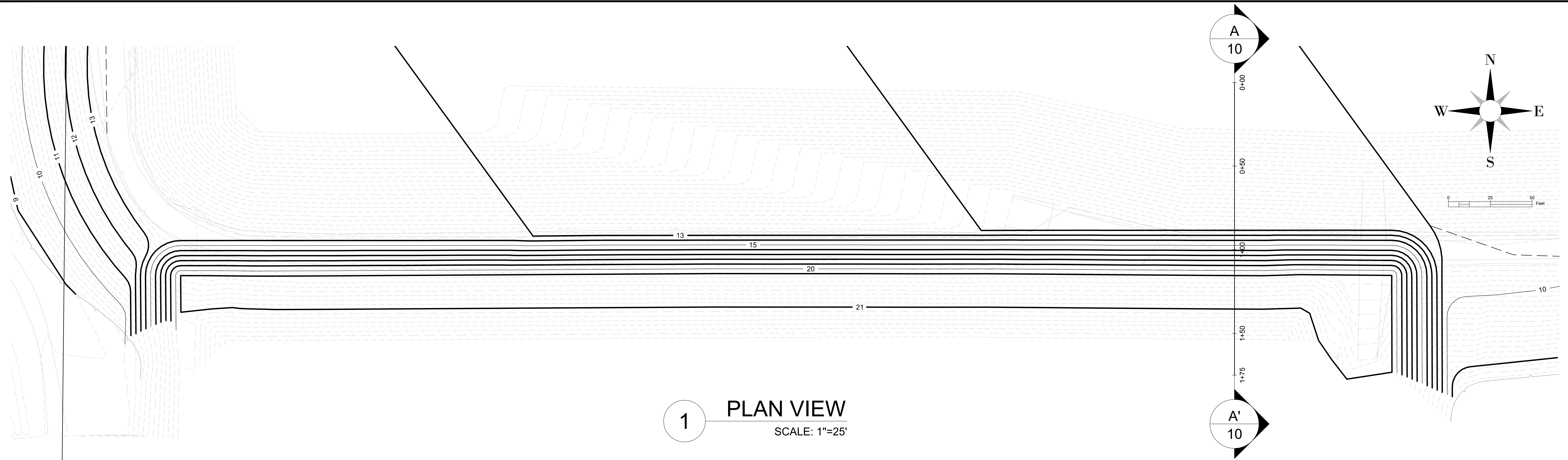
- NOTE:
- TAKE MEASURES TO PREVENT DIKE MATERIALS FROM ENTERING LONG TERM FLY ASH POND.
 - PLACE SOD ON ALL RECONFIGURED BERM SLOPES. PLACE HYDROSEED IN REMAINING PROJECT AREAS.

NO.	DATE	REVISION
0	3/22/19	ISSUED FOR CONSTRUCTION

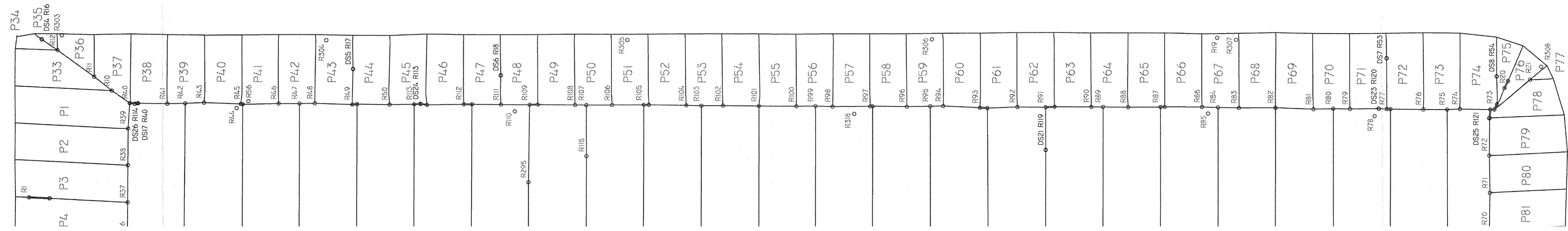
wood.
Environment & Infrastructure Solutions, Inc.
1510 Chokoloskee Road, Suite 200, Fort Myers, FL 33902
Phone: 813.435.1000
www.woodgroup.com

TAMPA ELECTRIC CO.
BIG BEND POWER STATION
ECONOMIZER ASH & PYRITES POND SYSTEM
POST CLOSURE GRADING PLAN
APOLLO BEACH, FLORIDA

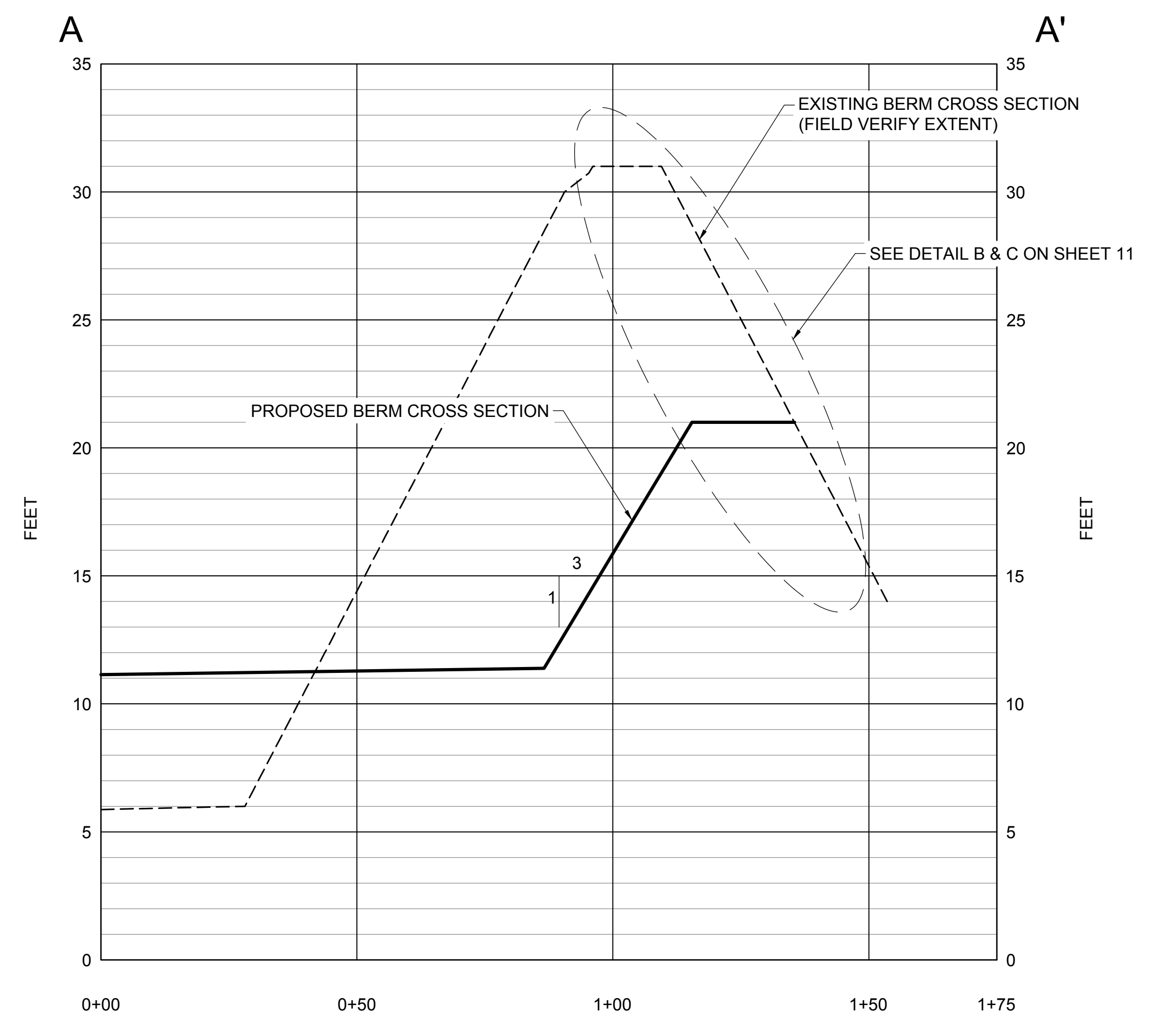
DATE: March 22, 2019
DRAWN BY: M. VIVES
CHECKED BY: T. ANDRY
PROJECT NO.: 300996X2



1 PLAN VIEW
SCALE: 1"=25'




REFERENCE: LINER PLAN IS BASED ON COMANCO "LONG TERM FLY ASH POND REPLACEMENT" DATED 3/7/2012.

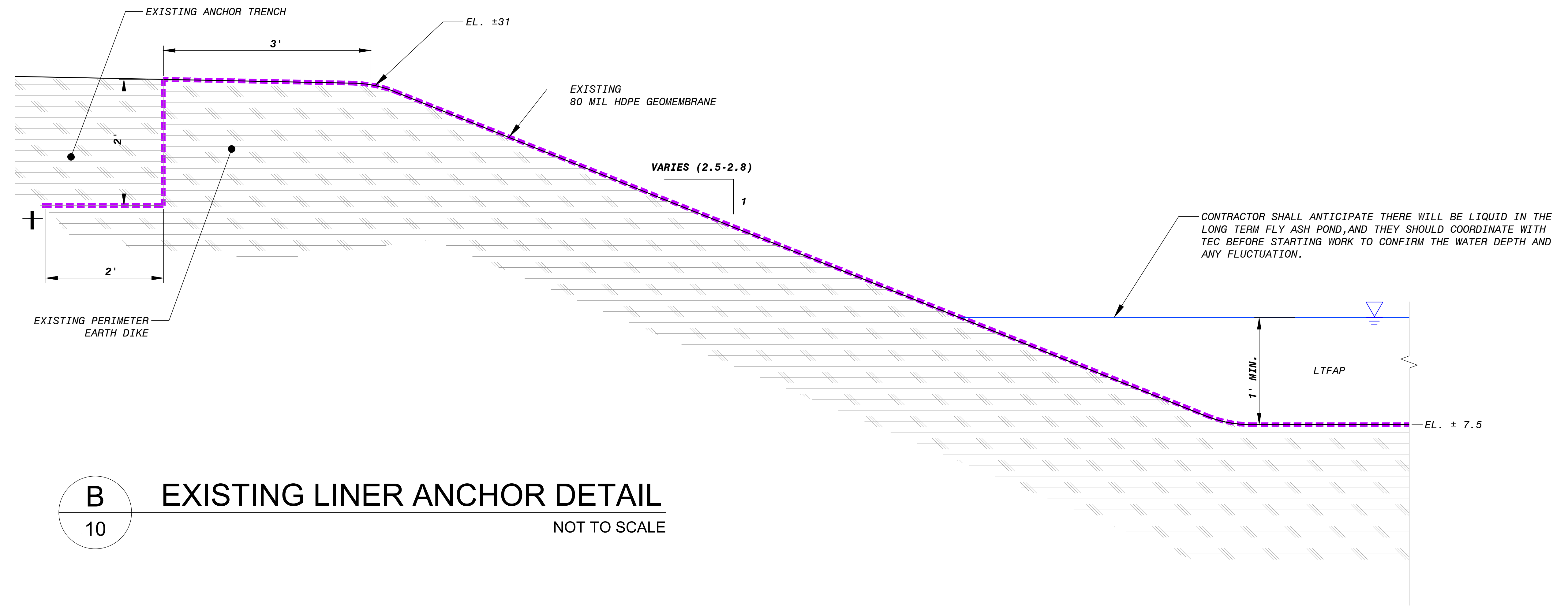


A CROSS SECTION A-A'
SCALE: AS SHOWN

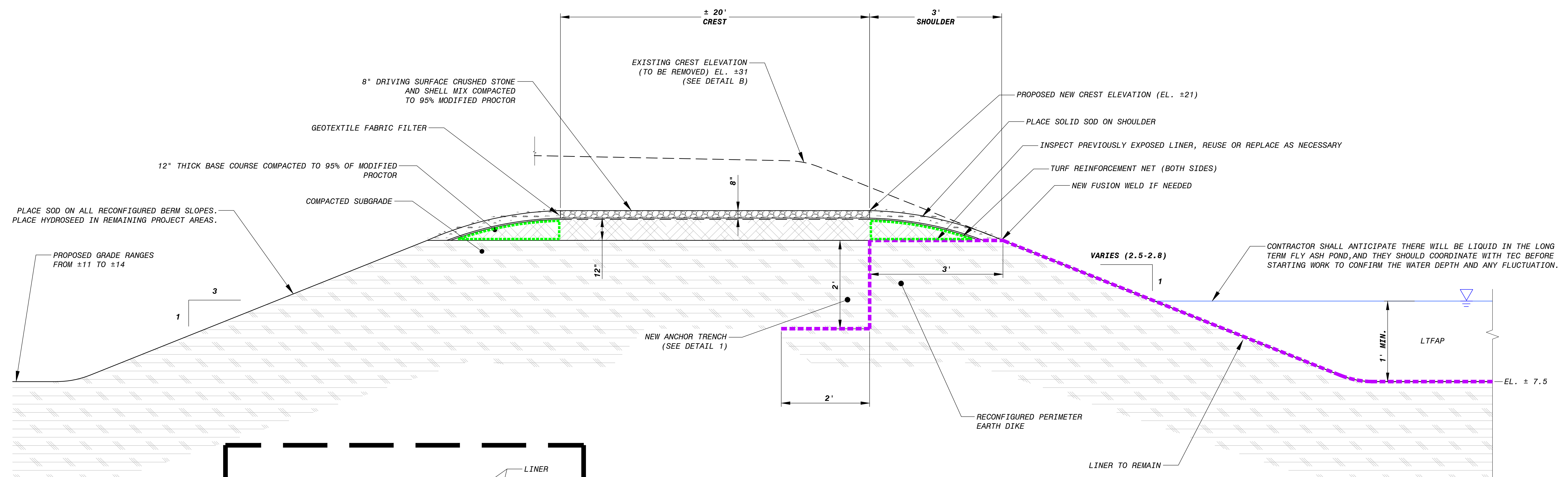
2 EXISTING LINER PLAN FOR NORTH BERM OF LONG TERM FLY ASH POND
NOT TO SCALE

NOT FOR CONSTRUCTION

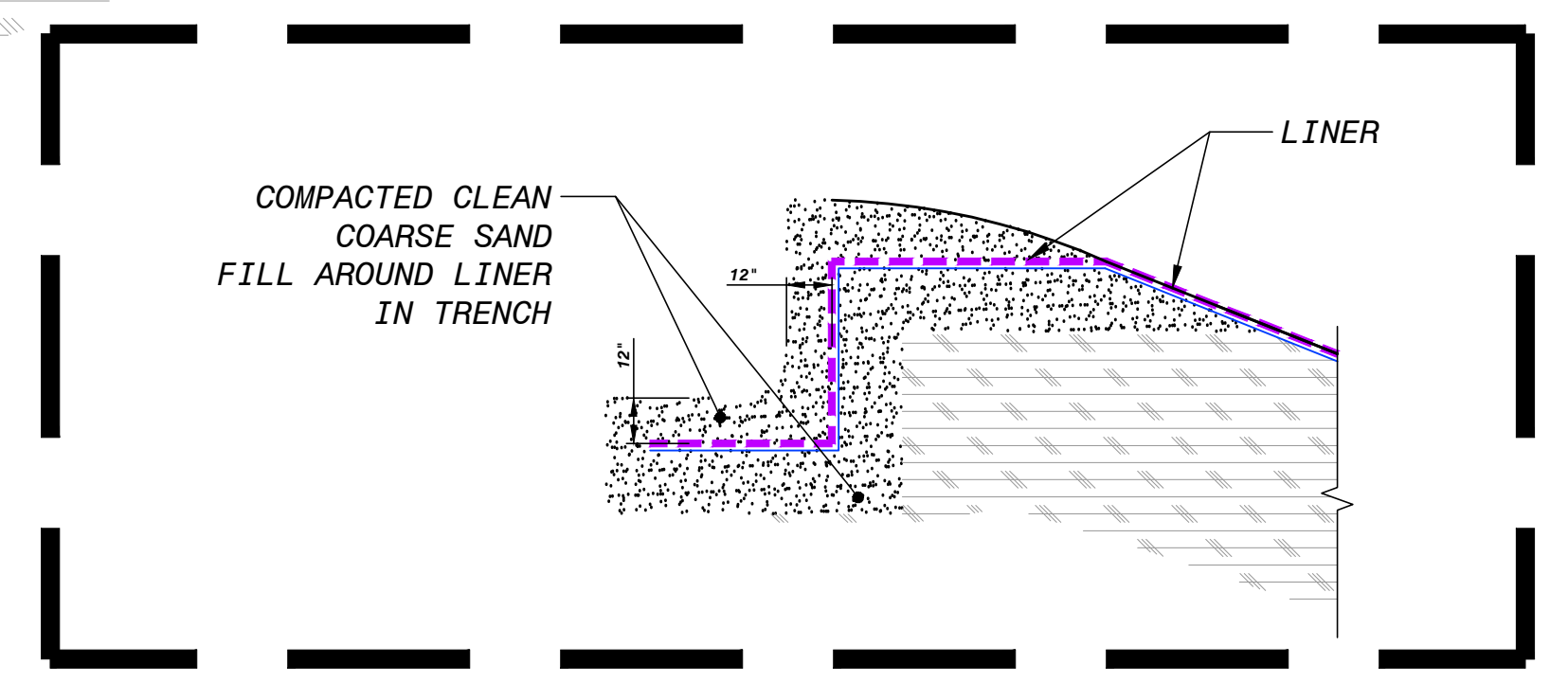
 Environment & Infrastructure Solutions, Inc. 1112 Chokoloskee Island Road, Suite 101, Sarasota, FL 34232 Phone: 941.554.4444 www.woodgroup.com			
TAMPA ELECTRIC CO. BIG BEND POWER STATION ECONOMIZER ASH & PYRITES POND SYSTEM BERM RESTORATION PLAN & DETAILS APOLLO BEACH, FLORIDA			
DATE:	March 22, 2019		
DRAWN BY:	M. VIVES		
CHECKED BY:	T. ANDRY		
PROJECT NO.:	300996X2		
NO.	DATE	ISSUED FOR CONSTRUCTION	REVISION
0	3/22/19		
10			



B EXISTING LINER ANCHOR DETAIL
10 NOT TO SCALE



C RECONFIGURED BERM DETAIL
10 NOT TO SCALE



1 TRENCH DETAIL
NOT TO SCALE

NOT FOR CONSTRUCTION

NO.	DATE	REVISION
0	3/22/19	ISSUED FOR CONSTRUCTION

wood.
Environment & Infrastructure Solutions, Inc.
1510 Chokoloskee Island Road, Suite 100
Naples, FL 34109
Phone: 239.438.3838
www.woodgroup.com

TAMPA ELECTRIC CO.
BIG BEND POWER STATION
ECONOMIZER ASH & PYRITES POND SYSTEM
ANCHOR DETAIL
APOLLO BEACH, FLORIDA

DATE: March 22, 2019
DRAWN BY: M. VIVES
CHECKED BY: T. ANDRY
PROJECT NO.: 300996X2