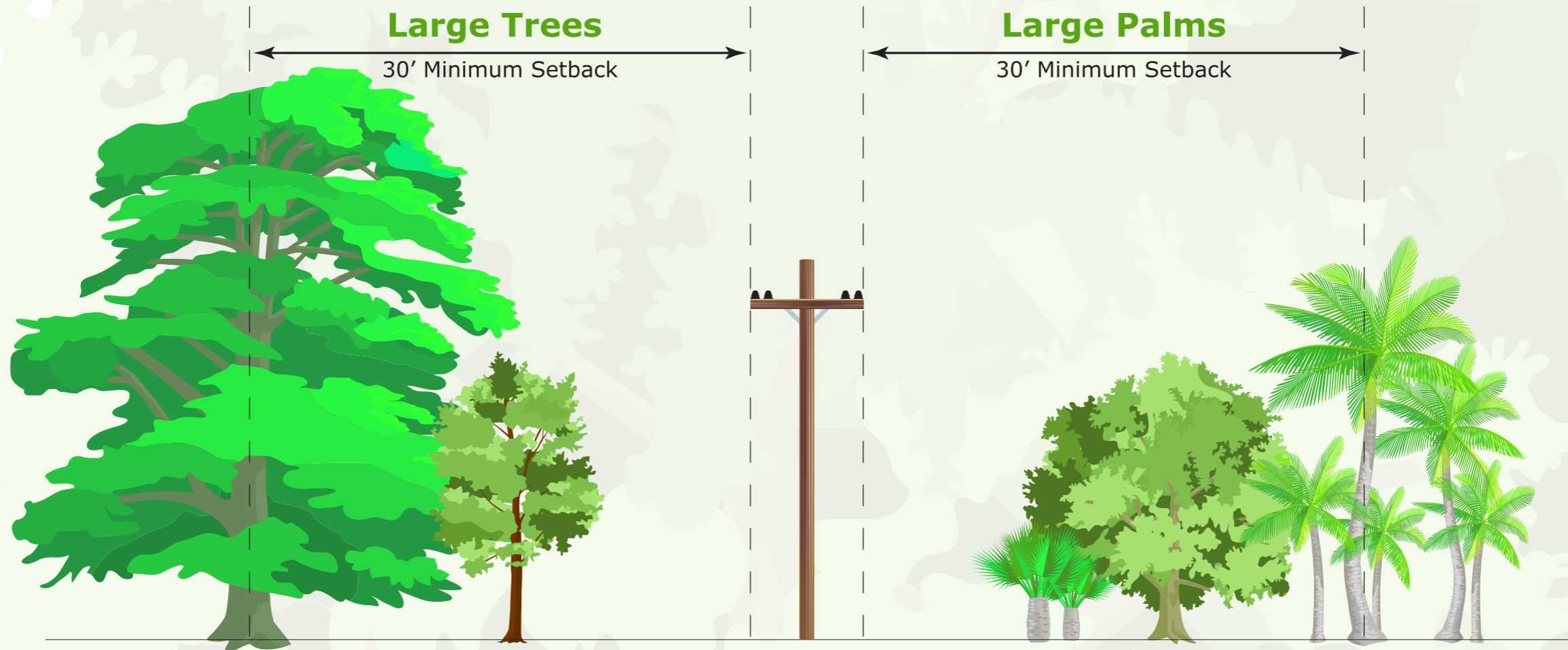


# Tree Planting & Safety Guide

The right trees can help make our community beautiful. Follow these planting recommendations to maintain safe, reliable electric service.

## Recommended Setback Distances from Power Lines



### Large Trees (over 25')

- Bald Cypress
- Chinese Elm
- Live Oak
- Magnolia
- Redcedar
- Shumard Oak
- Slash Pine
- Swamp Chestnut
- Sweetbay
- Sweetgum
- Sycamore
- Winged Elm



### Small Trees & Palms

- Chickasaw Plum
- Fringe Tree
- Holly
- Paurotis Palm
- Pindo Palm
- Pittosporum
- Privet
- Viburnum



### Large Palms (over 25')

- Date Palm
- Queen Palm
- Sabal Palm
- Washingtonia Palm

*Right Tree.  
Right Place.*