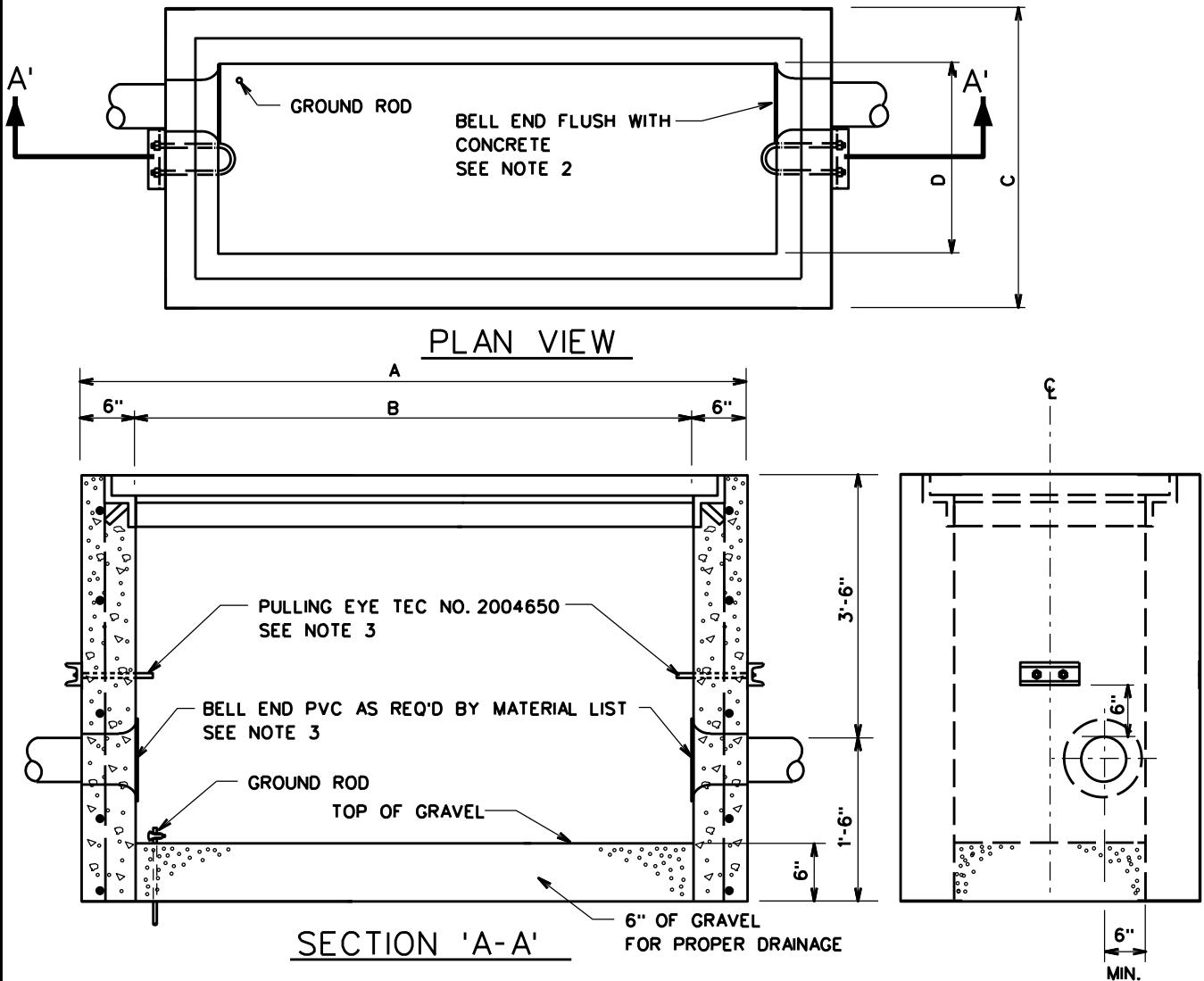


POURED IN PLACE

FRAME & COVER TEC NO.	DIMENSIONS				USE OR WIRE SIZE	PULL BOX SIZE	H-5145 REF. SHEET	
	A	B	C	D				
2004653	9'-0"	8'-0"	4'-0"	3'-0"	1000 MCM	3' X 8'	2 AND 2A	✕
2004652	7'-0"	6'-0"	5'-0"	4'-0"	NETWORK	4' X 6'	3 AND 3A	
2004739	6'-0"	5'-0"	3'-0"	2'-0"	1/0 AND 4/0	2' X 5'	4 AND 4A	✕
2004651	4'-0"	3'-0"	3'-0"	2'-0"	HANDHOLE	2' X 3'	5 AND 5A	

NOTES:

1. POURED IN PLACE BOXES SHOULD ONLY BE USED WHEN A PRECAST BOX IS NOT AVAILABLE.
2. SEE H-5145 SHEETS 1,2-5,2A-5A FOR FRAME AND COVER CONSTRUCTION DETAILS.
3. ENGINEER TO SPECIFY SIZE, NUMBER AND LOCATION OF BELL ENDS.
4. INSTALL PULLING EYE ON CENTER LINE OPPOSITE WALL OF BELL ENDS.
- ✕ 5. THESE BOXES WILL ACCOMMODATE ONE THREE-PHASE CIRCUIT.
- 6. USE CURB MARKER TEC NO. 2005212 ON CURB TO INDICATE MANHOLE/HANDHOLE LOCATION.  
CURB MARKERS SHOULD BE INSTALLED USING ADHESIVE TEC NO. 2007225.



➤ DENOTES LATEST REVISION

POURED IN PLACE CONCRETE PULLBOX AND  
HANDHOLE DESIGN

AM/ *Bob Shiley*  
MGR: STD'S  
APPR. DATE 4-16-98  
SUPERSEDES 6-1/8-20-87