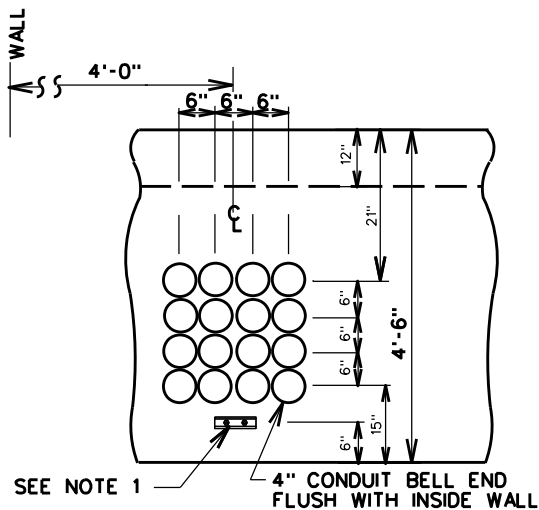
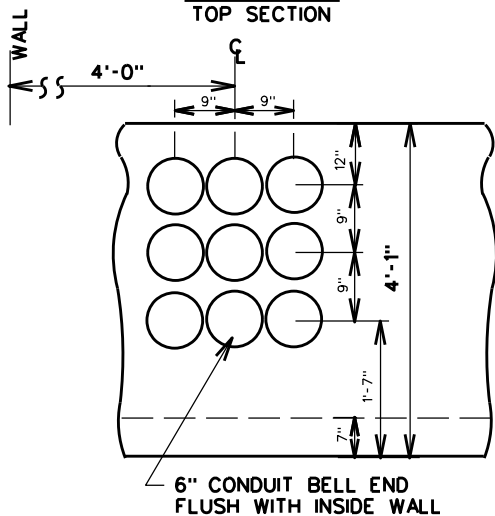


REFERENCES

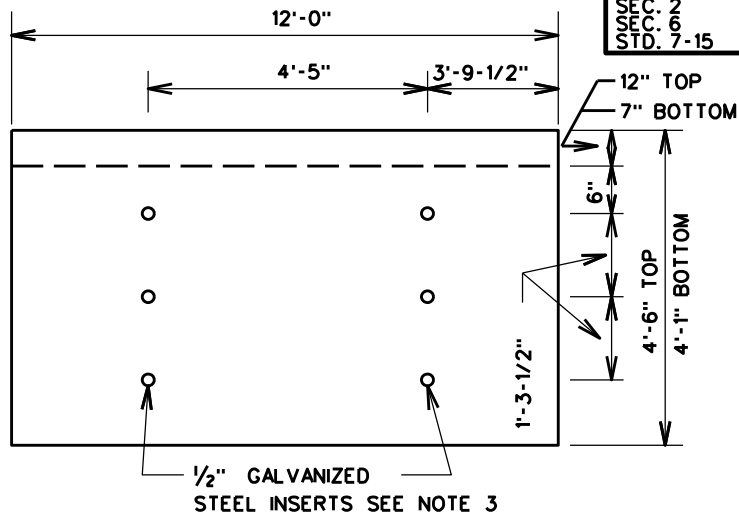
GR&S UG.  
 SEC. 2  
 SEC. 6  
 STD. 7-15



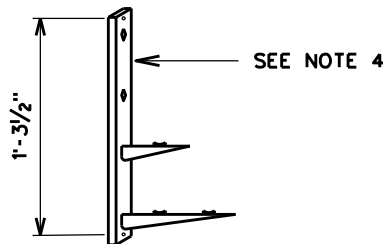
DETAIL "A"  
 TOP SECTION



DETAIL "B"  
 BOTTOM SECTION



DETAIL "C"  
 TYP. TOP OR BOTTOM



DETAIL "B"  
 TYPICAL CABLE RACK  
 AND SUPPORTS

NOTES:

1. PULLING EYES TEC NO. 2004650 OPPOSITE OF EACH DUCT BANK.
2. A TEMPORARY PULLING EYE WILL BE ATTACHED TO SL LIFTING EYE ANCHOR 5 TON 3/4" X 4-3/4" IN CENTER OF FLOOR. (THIS IS NOT TO BE USED TO LIFT BOX).
3. GALVANIZED STEEL INSERTS ON ALL 12' WALLS FOR CABLE RACKS IN TOP & BOTTOM SECTIONS.
4. USE CABLE RACKS & SUPPORTS AS NEEDED TO SUPPORT/RACK CABLE.
5. H 20 LOAD CLASS
6. ARRANGEMENTS SHALL BE MADE THROUGH A DESIGNATED COORDINATOR IN EACH AREA TO NOTIFY SUPPLIER WHEN AND WHERE TO HAVE BOX SET. IN THE EVENT OF A CHANGE OF PLANS, THE SUPPLIER MUST BE NOTIFIED BY THE DESIGNATED AREA COORDINATOR.
7. SPECIFY TEC NO. 2004696 FOR MANHOLE FRAME AND COVER.
8. A MINIMUM OF (2) TWO AND A MAXIMUM OF (8) EIGHT PRECAST COLLARS, TEC NO. 2004705, SHOULD BE USED WITH EACH PRECAST PULLBOX/SPLICEBOX INSTALLATION.
9. EXCAVATION OF 15'-0" X 11'-0" REQUIRED TO INSTALL MANHOLE.
10. ON SITE CONTRACTOR SHALL INSTALL EXTERNAL DRIVEN GROUNDS, MAKE-UP GROUND WIRE TO DRIVEN RODS, AND INSTALL GROUND WIRE INTO MANHOLE AND SEAL. CONTRACTOR TO MEASURE GROUND EARTH RESISTANCE TO BE 25 OHMS OR LESS.
- ▶ 11. USE CURB MARKER TEC NO. 2005212 ON CURB TO INDICATE MANHOLE/HANDHOLE LOCATION. CURB MARKERS SHOULD BE INSTALLED USING ADHESIVE TEC NO. 2007225.

◀ DENOTES LATEST REVISION

7'-0" HEAD ROOM  
 TEC NO. 2004691

8' X 12' X 7'  
 "S" TYPE PRECAST MANHOLE

AM/ *Bob Shilling*  
 MGR: STD'S  
 APPR. DATE 4-16-98  
 SUPERSEDES 6-2/3-16-95