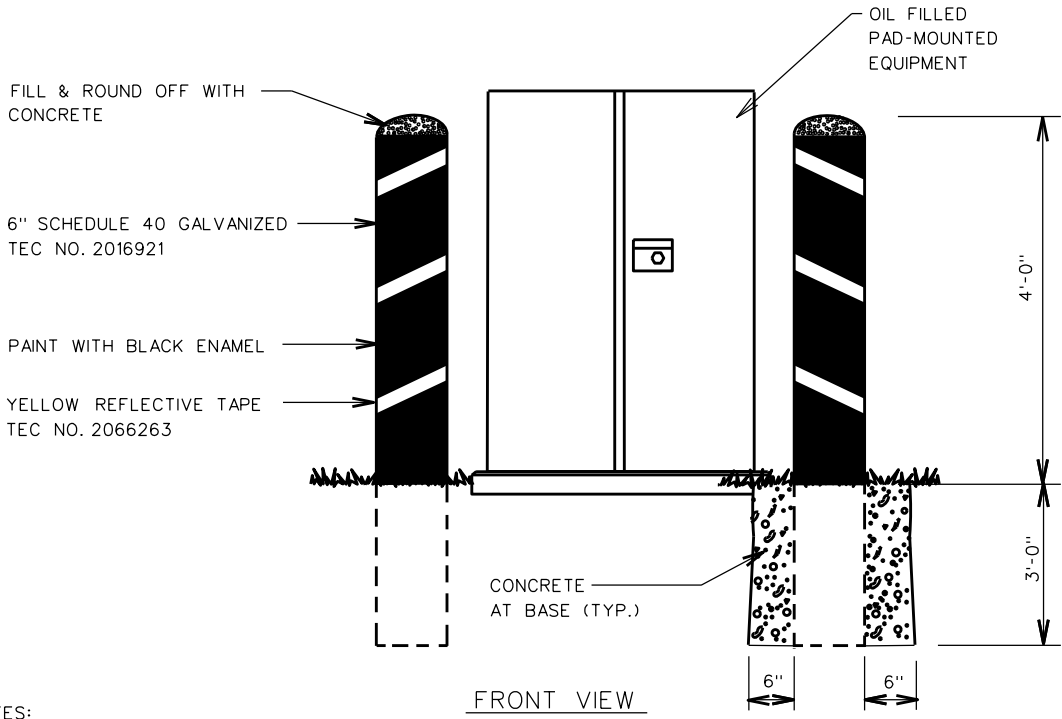
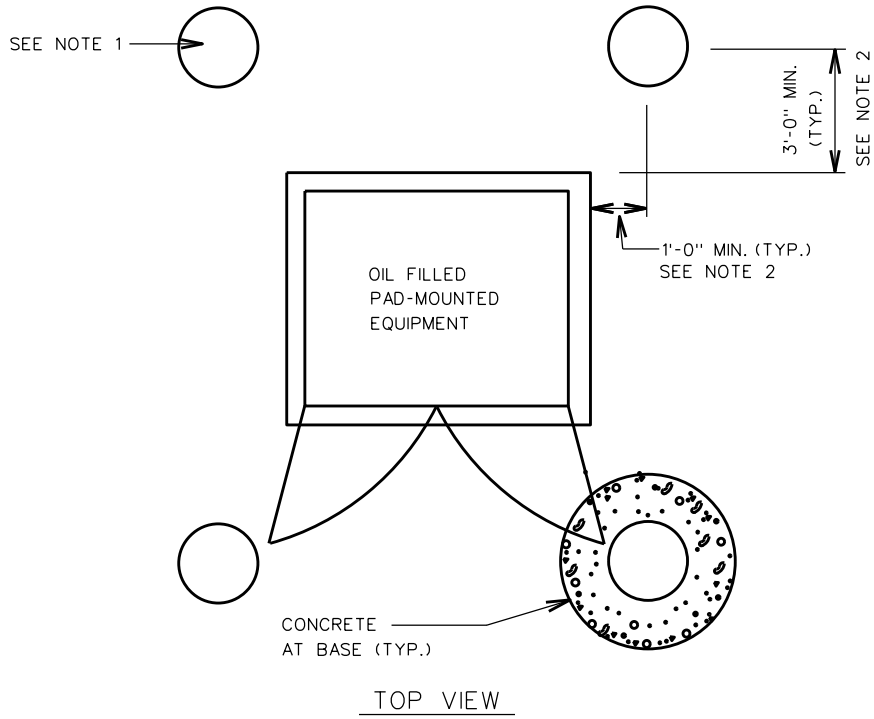


REFERENCES	
GR&S UG	
SEC. 1	
SEC. 11	
SEC. 12	



- NOTES:
- UP TO 4 BOLLARDS SHOULD BE INSTALLED AROUND PERIMETER WHEN OIL FILLED PAD-MOUNTED EQUIPMENT IS LOCATED IN ANY AREA ACCESSIBLE TO VEHICLES FOR PROTECTION OF AREAS THAT COULD BECOME CONTAMINATED WITH MINERAL OIL SUCH AS : DRAINAGE PONDS, FOOD SERVICE AREAS, PARKING LOT DRAINS, OR OTHER SENSITIVE AREAS.
 - DISTANCES CAN VARY WITH SIZE OF EQUIPMENT DOORS, DOOR STOP ANGLE AND TYPE OF MAINTENANCE/OPERATION PROCEDURES NECESSARY TO MAINTAIN/OPERATE/REPLACE EQUIPMENT IN A SAFE MANNER.

3			
2			
1	REM	11-4-04	MOVED TO MAKE 1-17, PG. 2
NO.	CK'D	DATE	REVISION

◀ DENOTES LATEST REVISION

MGR: STD'S *Bob Shilling*
 APPR. DATE 11-4-04
 SUPERSEDES 1-18/11-17-93

INSTALLATION PROCEDURE FOR PROTECTIVE BOLLARDS USED WITH PAD-MOUNTED EQUIPMENT